

**Addendum No. 4
October 27, 2023**

Project: **Harrisburg South Middle School Theatre Addition**
Harrisburg, South Dakota
Architecture Incorporated Project #3024

Architect: Architecture Incorporated

Letting: **Thursday, November 2, 2023
2:00 p.m.**

Location: Community Center Conference Room at the Harrisburg School District Administration Offices, 200 Willow Street, Harrisburg, South Dakota 57032. (Enter from southeast community center entrance).

Scope of this Addendum:

To all bidders and all others to whom drawings and specifications have been issued by Architecture Incorporated, this Addendum forms a part of the Contract Documents. Acknowledge receipt of this addendum by listing its number and date in the bidder's Form of Proposal. Failure to do so may subject bidder to disqualification. This addendum modifies the drawings and specifications as follows:

GENERAL ITEMS:

1) SECTION 087100 – DOOR HARDWARE

- a) 087100-15, Hardware Group #8 – Provide electric hold opens at door B105 in lieu of Manual Hold Opens.

2) SECTION 092900 – GYPSUM BOARD

- a) Revise Article 2.5.C. as follows:

C. Joint Compound for Interior Gypsum Board: For each coat use formulation that is compatible with other compounds applied on previous or for successive coats.

- 1. *Prefilling: At open joints [, **rounded or beveled panel edges,**] and damaged surface areas, use setting-type taping compound.*
- 2. *Embedding and First Coat: For embedding tape and first coat on joints, fasteners, and trim flanges, use [**drying-type, all-purpose**] compound.*
- 3. *Fill Coat: For second coat, use [**drying-type topping**] compound.*
- 4. *Finish Coat: For third coat, use [**drying-type, topping**] compound.*

3) SECTION 093000 - TILING

- a) Revise Article 3.8.A as follows:

i) **(Basic Floor)** Interior Floor Installations, On-Ground Concrete:

- (1) Tile Installation TCNA F125-18: Thin-set mortar; Advanced Performance grout.

- (a) Tile Type: **(T-1, T-3).**
- (b) Thin-Set Mortar: Latex- portland cement mortar.

- (c) Grout: **Advanced Performance.**
- (d) Crack isolation membrane.

b) Revise Article 3.8.B as follows:

i) **(Quarry Tile)** Typical Commercial Kitchen.

(1) Tile Installation: TCNA F115-20: On-Ground Concrete, Epoxy Grout

- (b) Tile Type: **(QT-1)**
- (c) Thin-set Mortar: Mid-level Latex Modified – TEC SuperFlex
- (d) Grout: **Water Cleanable Epoxy Grout**
- (e) Tile needs to be sealed
- (f) Crack isolation membrane.

4) SECTION 210500 – FIRE SUPPRESSION

a) Replace 210500, 1.01 SCOPE with the following:

The GENERAL, SUPPLEMENTAL, and other CONDITIONS of the Contract and the GENERAL REQUIREMENTS (Division 1) are hereby made part of this Section.

Section 210100, General Provisions, in its entirety, including references to the General Construction Specifications, are hereby adopted and made a part of these Specifications.

The Work involved in this specification and the accompanying Drawings consists of performing all labor and furnishing of all materials, fixtures, and equipment necessary to install a complete fire protection system as described herein and/or shown on the Drawings. This includes all piping, wiring and materials obviously necessary for complete systems though not specifically mentioned or shown.

The fire protection system shall be a wet system. Provide a new zone to protect the new addition and add fire coverage to the existing Gym A103 and P.E. Storage 104. The contractor shall take appropriate steps to protect the gym floor during installation of the fire suppression system and will be responsible for any damage that occurs during construction. Modify the existing fire sprinkler riser located in the existing mechanical room for installation of additional zone. The system in office areas shall be designed for light hazardous classification. The storage and mechanical areas shall be designed for ordinary hazard, group 1 classification. The stage area and P.E. Storage shall be designed for ordinary hazard, group 2 classification. Provide two 1-1/2" brass angle fire hose valve, female x male with cap and chain, on each side of the stage. Serve the fire hose valves from an adjacent fire sprinkler zone. Provide coverage for all concealed combustible spaces including, but not limited to the attics. The system shall be complete with sprinkler heads, piping, valves, alarm bell, fire department connection and controls necessary for a complete system.

5) DRAWING 1.20 – CODE PLAN

a) Reference revised sheet 1.20, with revision date of 10-26-23, attached at the end of this addendum, for occupant loads and required exit widths.

6) DRAWING 4.00B – DEMOLITION PLAN – AREA B

a) Reference revised sheet 4.00B, with revision date of 10-26-23, attached at the end of this addendum, for additional floor slab demo in Served B120.

7) DRAWING 4.10B – FLOOR PLAN – AREA B

- a) Reference revised sheet 4.30, with revision date of 10-26-23, attached at the end of this addendum, for wall type tags that have been added to new walls that were not previously tagged.
- b) Omit the following door #'s from the floor plan (these are existing doors that remain: B171, B172, B173, B180-2).

8) DRAWING 4.20B – FINISH PLAN – AREA B

- a) ROOM FINISH NOTES: Add note: '**j. PAINT BOTH SIDES OF EXISTING HOLLOW METAL FRAMES AND BORROWED LITE FRAMES IN THESE ROOMS**'.
- b) ROOM FINISH SCHEDULE: Add Room Finish Note 'j.' to the 'NOTES' column at the following rooms: Reception B170, Nurse B171, RR B173, Conference B177, Hall B178, Work Room B179, Assistant Principal B180, and Principal B181.

9) DRAWING 4.30 – DOOR SCHEDULE

- a) Reference revised sheet 4.30, with revision date of 10-26-23, attached at the end of this addendum, for the following revisions on the DOOR SCHEDULE:
 - i) Door A130-1 – change head detail ~~11/4.31~~ to head detail **22/4.31** with a 2" frame at head. Change jamb detail ~~2/4.31~~ to **7 & 8/4.33**.
 - ii) Door A130-2 – change head detail ~~11/4.31~~ to head detail **22/4.31** with a 2" frame at head. Change jamb detail ~~2/4.31~~ to **7 & 8/4.33**.
 - iii) Door A132-2 – change jamb detail ~~2~~, 9/4.31 to **3**, 9/4.31.
 - iv) Door A132-4 – change jamb detail ~~2~~, 9/4.31 to **3**, 9/4.31.
 - v) Door A134-6 – change head detail ~~11/4.31~~ to **14/4.31**. Change jamb depth from ~~5-3/4"~~ to **8 1/4"**.
 - vi) Door A133-1 – change head detail ~~18/4.31~~ to **17**, 9/4.31.
 - vii) Door A135-2 – change door size from '~~6'-0" w. x 7'-0" h.~~' to '**7'-8" w. x 7'-8" h.**'. Maintain south jamb location.
 - viii) Door A135-3 – change 7'-8" w. x ~~7'-0"~~ h. door to **7'-8" w. x 7'-10" h.** door. Change frame type from '~~2~~' to '**1**'. Change jamb depth from ~~7-1/4"~~ to **8 1/4"**.
 - ix) Door A141-1 – change head detail ~~11/4.31~~ to head detail **22/4.31** with a 2" frame at head.
 - x) Door B105 – change door size from ~~6'-0" w. x 7'-0" h.~~ to **7'-8" w. x 7'-10" h.** Change frame type '~~2~~' to frame type '**1**'. Change head detail ~~11/4.31~~ to head detail **22/4.31** with a 2" frame at head.
 - xi) Door B120-1 – Change door glass from '~~1/4" CLEAR~~' to '**1/4" SAFETY**'.
 - xii) Door B120-2 – provide head detail **11/4.30** and jamb detail **12/4.30**.
 - xiii) Door B120-3 – provide head detail **11/4.30** and jamb detail **12/4.30**.
 - xiv) Door B174 – change door glass from '~~1/4" CLEAR~~' to '**1/4" SFTY**'.
 - xv) Door B175 – change door glass from '~~1/4" CLEAR~~' to '**1/4" SFTY**'.
 - xvi) Door B176 – change door glass from '~~1/4" CLEAR~~' to '**1/4" SFTY**'.
 - xvii) Door B170-2 – add: ADDITIONAL NOTE: '**CUT EXISTING BURNISHED JAMB BLOCK FROM 3'-4" TO 0'-0"**'. EASE VERTICAL EDGE OF BURNISHED BLOCK TO MATCH EXISTING ABOVE'.
 - xviii) Door B180-1 – add: ADDITIONAL NOTE: '**CUT EXISTING BURNISHED JAMB BLOCK FROM 3'-4" TO 0'-0"**'. EASE VERTICAL EDGE OF BURNISHED BLOCK TO MATCH EXISTING ABOVE'.
 - xix) Reference *revised* drawing Sheet 4.30, with revision date of 10-26-23, attached to the end of this addendum for newly added details. **JAMB - 7/4.30, HEAD/SILL - 8/4.30, HEAD - 9/4.30, JAMB - 10/4.30, HEAD - 11/4.30, and JAMB - 12/4.30**

10) DRAWING 4.31 – DOOR DETAILS

- a) Reference the BORROWED LITE TYPES SCHEDULE on *revised* drawing Sheet 4.31, with revision date of 10-26-23, attached to the end of this addendum, for newly added head, jamb, and sill detail references for borrowed lite types (MARK); 1, 2 and 3.
- b) Reference the BORROWED LITE TYPES SCHEDULE on *revised* drawing Sheet 4.31, with revision date of 10-26-23, attached to the end of this addendum; add a vertical mullion at borrowed lite type '3' as shown (two equal spaces).
- c) Reference *revised* drawing Sheet 4.31, with revision date of 10-26-23, attached to the end of this addendum, for revised details. **HEAD - 15/4.31, JAMB - 16/4.31.**
- d) Reference *revised* drawing Sheet 4.31, with revision date of 10-26-23, attached to the end of this addendum, for revised details. **HEAD - 19/4.31, JAMB - 20/4.31, SILL – 21/4.31.** (Details omit bent plat at head and jambs and add steel pipe at sill detail).
- e) Reference *revised* drawing Sheet 4.31, with revision date of 10-26-23, attached to the end of this addendum, for newly added detail. **HEAD - 22/4.31.**

11) DRAWING 5.45 – SECTION DETAILS

- a) Detail 2/5.45 – aluminum storefront framing shown in this detail shall be center glazed with ¼” laminated safety glass as noted in door schedule (not 1” front glazed as shown in this detail).

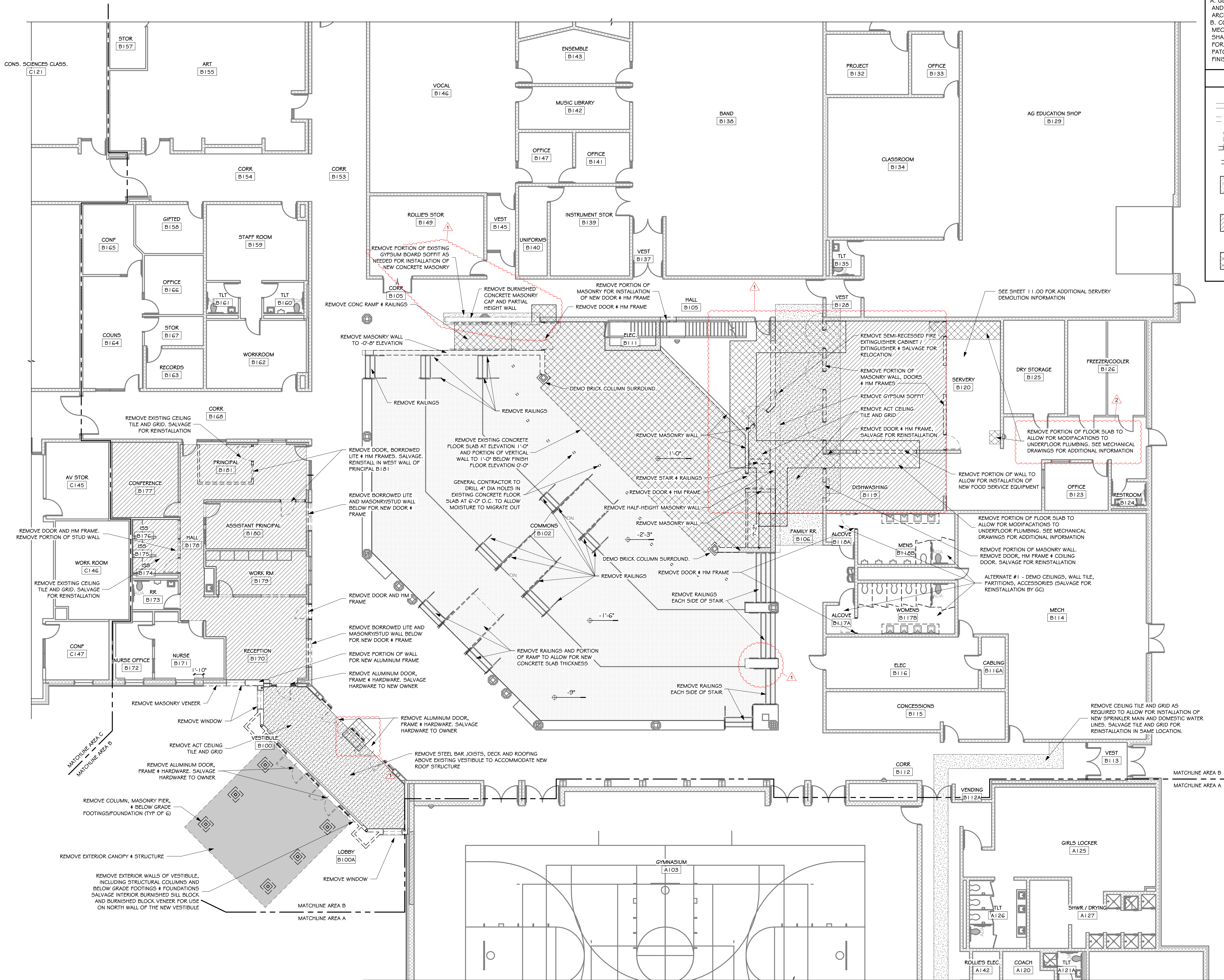
GENERAL APPROVALS:

The following material or equipment furnished by the manufacturers listed may be substituted as equivalent providing that each item, material, and piece of equipment conforms to the design and requirement of the specifications.

<u>SECTION</u>	<u>ITEM</u>	<u>MANUFACTURER</u>
072726	Fluid-Applied Weather Barriers	NaturaSeal NS A250 HP
083613	Overhead Sectional Door	Raynor

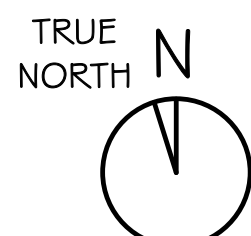
END OF ADDENDUM No. 4

10/27/2023 12:45:45 PM



DEMOLITION FLOOR PLAN - AREA B

SCALE: 1/8" = 1'-0"

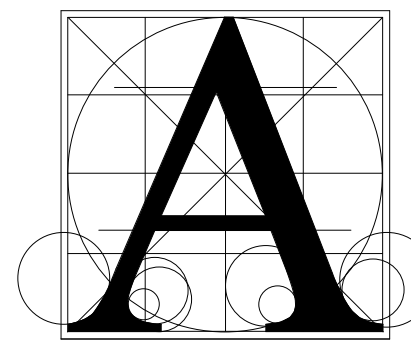


GENERAL NOTES - DEMOLITION

- A. GENERAL CONTRACTOR SHALL VERIFY ALL EXISTING CONDITIONS AND DIMENSIONS AT THE JOB SITE. REPORT DISCREPANCIES TO THE ARCHITECT.
- B. COORDINATE FLOOR SLAB AND CEILING DEMOLITION WITH MECHANICAL AND ELECTRICAL DRAWINGS. GENERAL CONTRACTOR SHALL REMOVE FLOOR SLABS AND CEILINGS AS REQUIRED TO ALLOW FOR INSTALLATION OF NEW MECHANICAL AND ELECTRICAL SYSTEMS. PATCH CONCRETE SLABS AND CEILINGS BACK TO MATCH ADJACENT FINISHES.

DEMOLITION LEGEND

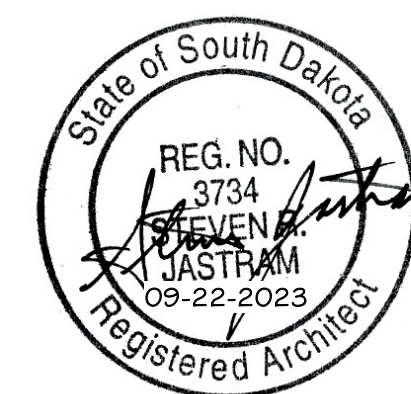
- INDICATES EXISTING ITEMS TO REMAIN
- - - INDICATES DEMOLITION ITEMS
- INDICATES DOOR AND FRAME TO BE REMOVED. (UNO)
- INDICATES WINDOW TO BE REMOVED. (UNO)
- REMOVE EXISTING CEILING, OR PORTION OF CEILING, IN THESE ROOMS.
- REMOVE EXISTING FLOOR FINISH, OR PORTION OF FLOOR FINISH, AND ASSOCIATED BASE IN THESE ROOMS.
- REMOVE AND DISPOSE OF CONCRETE FLOOR SLAB AT HATCH AREA.



Architecture
Incorporated

415 South Main Avenue
P.O. Box 2140
Sioux Falls, South Dakota 57101
Phone: (605) 339-1711

815 St Joseph Street, Suite 203
P.O. Box 8047
Rapid City, South Dakota 57701
Phone: (605) 721-1158

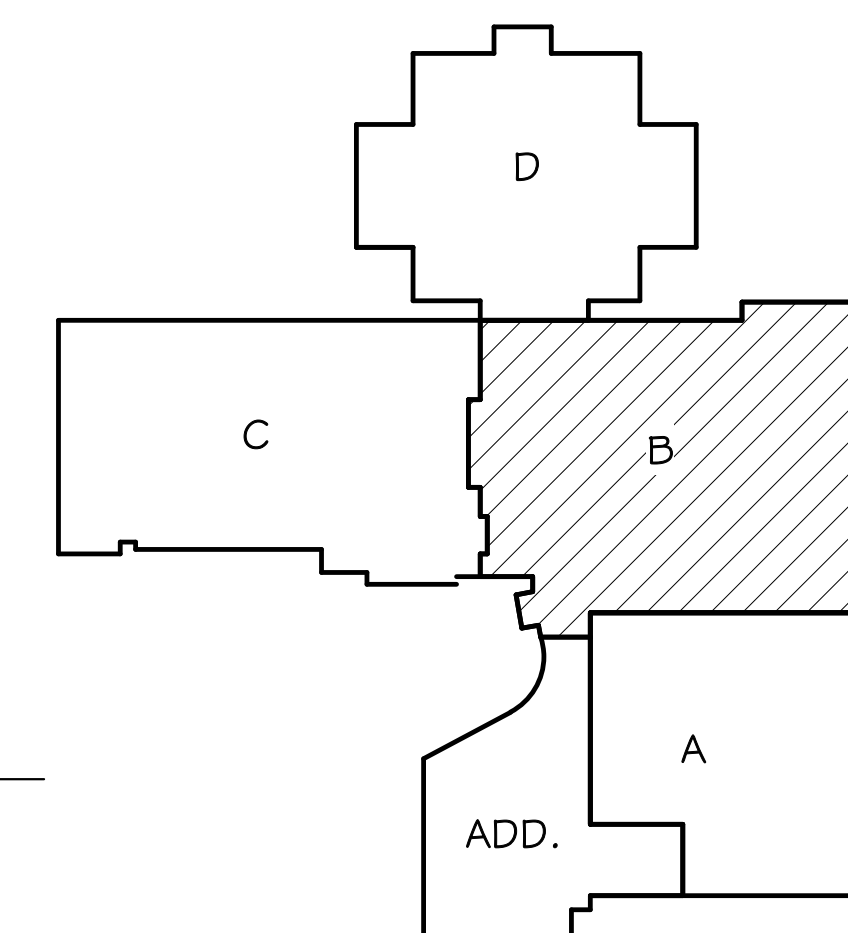


Project **HARRISBURG SOUTH MS THEATRE ADDITION**

Sheet Contents **DEMOLITION FLOOR PLAN - AREA B**

number	0306.3024.23
date	September 22, 2023
revision	
drawn	ZJC
checked	SRJ

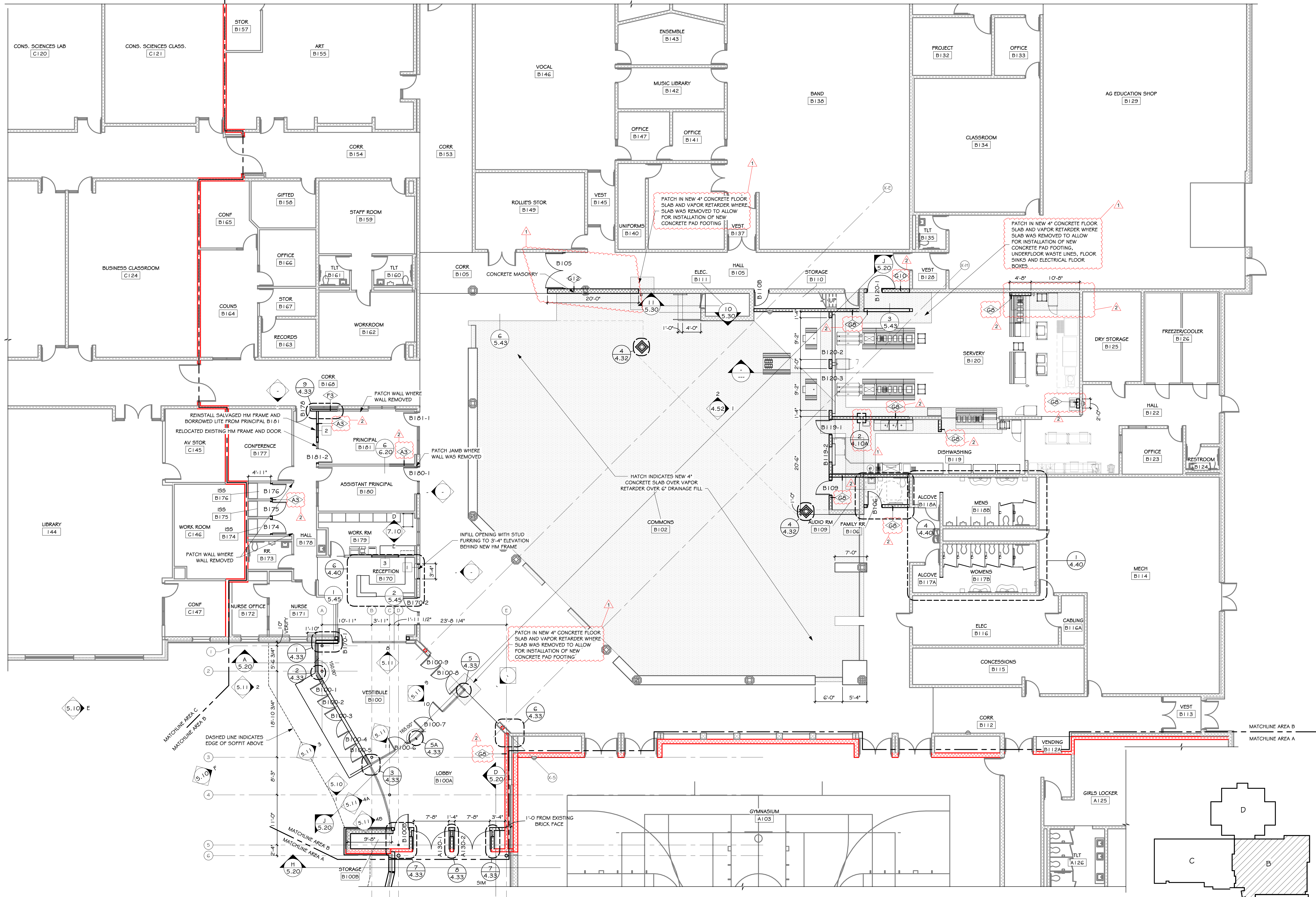
NO.	DATE	DESCRIPTION
1	10-16-23	ADDENDUM #2
2	10-27-23	ADDENDUM #4



KEYPLAN

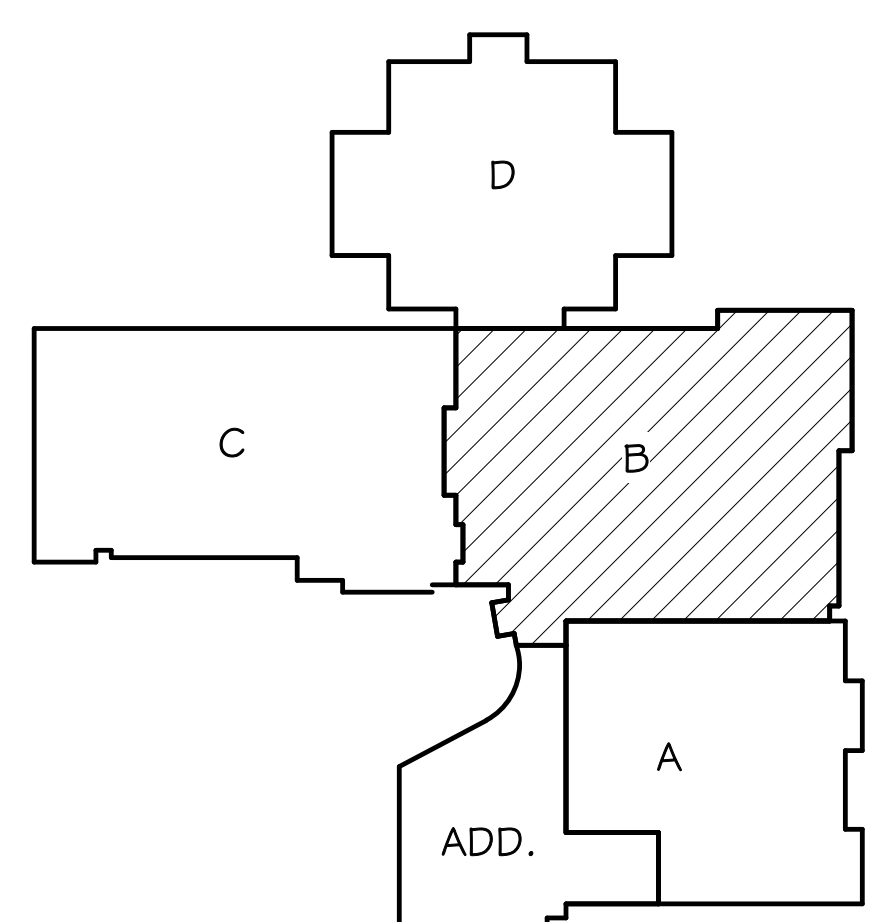
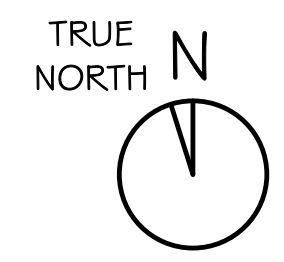
4.00B

10/27/2023 12:45:48 PM

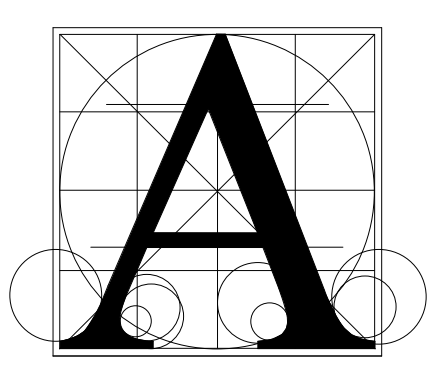


FLOOR PLAN - AREA B

SCALE: 1/8" = 1'-0"



KEYPLAN



Architecture
Incorporated

415 South Main Avenue
P.O. Box 2140
Sioux Falls, South Dakota 57101
Phone: (605) 339-1711

815 St Joseph Street, Suite 203
P.O. Box 8047
Rapid City, South Dakota 57701
Phone: (605) 721-1158



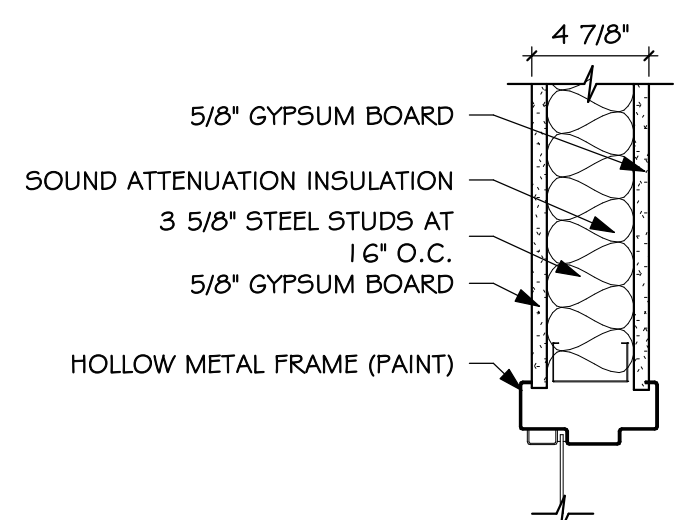
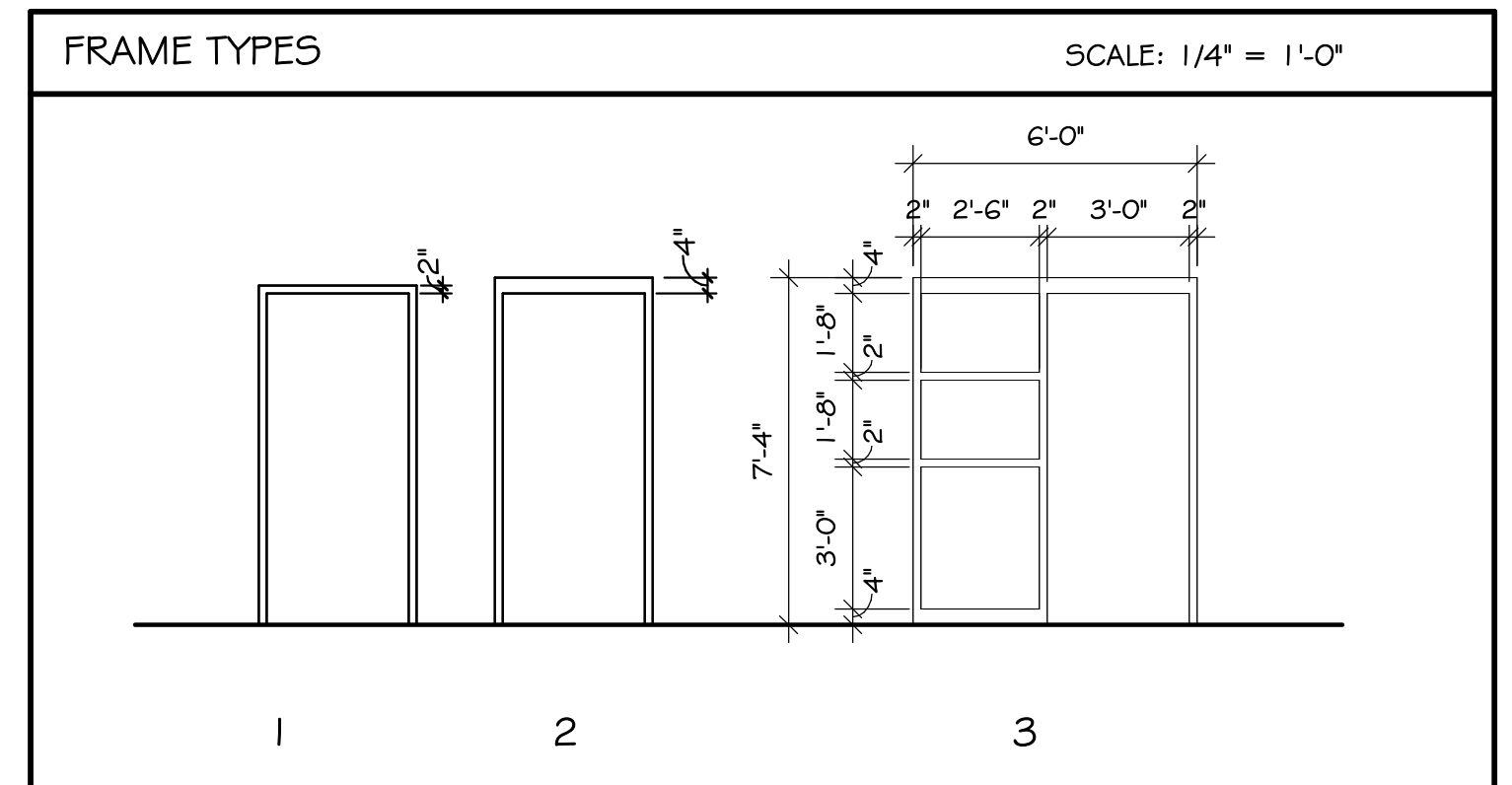
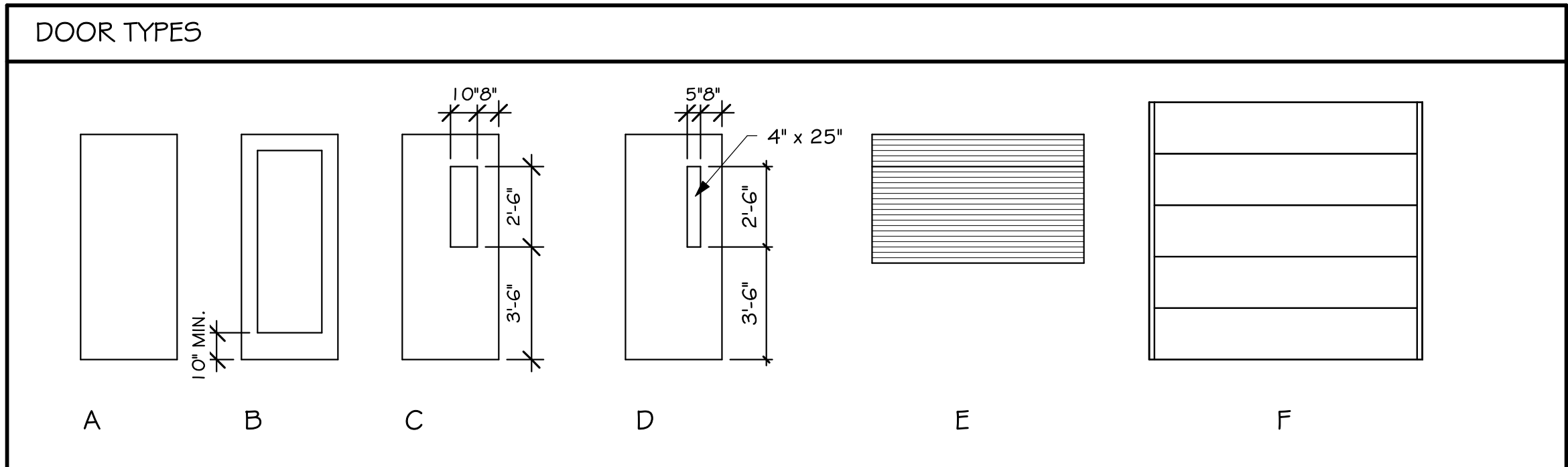
Project
HARRISBURG SOUTH MS THEATRE ADDITION

Sheet Contents
FLOOR PLAN - AREA B

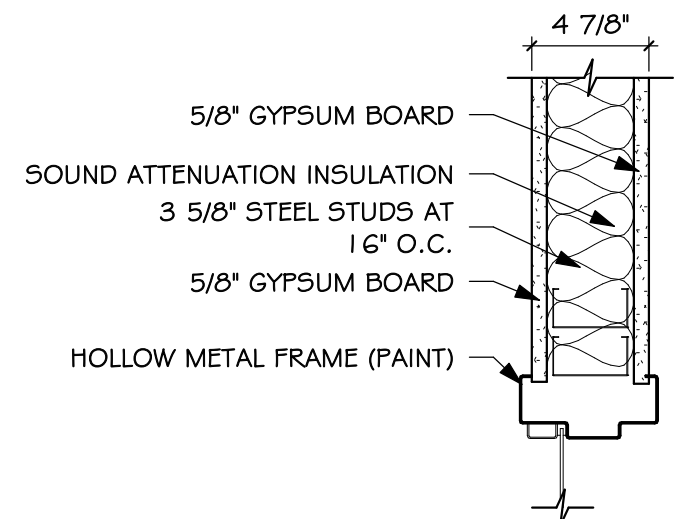
number	0306.3024.23		
date	September 22, 2023		
revision			
drawn	ZJG	checked	SRJ
NO.	DATE	DESCRIPTION	
1	10-16-23	ADDENDUM #2	
2	10-27-23	ADDENDUM #4	

4.10B

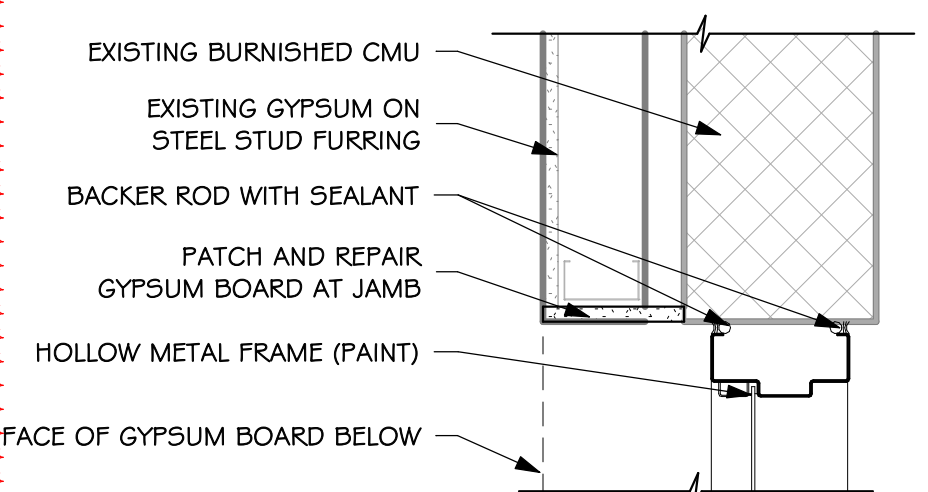
DOOR SCHEDULE																
MARK	DOOR						TRANSOM GLASS	SIDELITE GLASS	TYPE	FRAME				HARDWARE GROUP	ADDITIONAL NOTES	
	WIDTH	HEIGHT	TYPE	MATERIAL	FINISH	FIRE				GLASS	MATERIAL	HEAD DETAIL	JAMB DETAIL			JAMB DEPTH
A130-1	8'-0"	7'-10"	DD	HM	PAINT	90MIN	FIRE SFTY		1	HM	22/4.31	7,8/4.33	5 3/4"	1	ELEC HOLD OPEN, FIRE SFTY	
A130-2	8'-0"	7'-10"	DD	HM	PAINT	90MIN	FIRE SFTY		1	HM	22/4.31	7,8/4.33	5 3/4"	1	ELEC HOLD OPEN, FIRE SFTY	
A132-1	6'-0"	7'-0"	AA	SCWOOD	STAIN				2	HM	1/4.31	2,9/4.31	5 3/4"	2		
A132-2	6'-0"	7'-0"	AA	SCWOOD	STAIN				2	HM	1/4.31	3,9/4.31	5 3/4"	3		
A132-3	6'-0"	7'-0"	AA	SCWOOD	STAIN				2	HM	1/4.31	2,9/4.31	5 3/4"	2		
A132-4	6'-0"	7'-0"	AA	SCWOOD	STAIN				2	HM	1/4.31	3,10/4.31	5 3/4"	3		
A132-5	3'-0"	7'-0"	A	SCWOOD	STAIN				2	HM	1/4.31	2,3/4.31	5 3/4"	4		
A132-6	3'-0"	7'-0"	A	HM	PAINT				2	HM	1/4.31	2,9/4.31	5 3/4"	5		
A133-1	8'-0"	7'-10"	AA	HM	PAINT				1	HM	17/4.31	11,12/4.31	5 3/4"	2		
A133-2	8'-0"	7'-0"	F	INSL METAL	PREFINISH				-	-	19/4.31	20/4.31	-	-	OVERHEAD INSULATING, SILL DETAIL 21/4.31	
A134	3'-0"	7'-0"	A	HM	PAINT				2	HM	1/4.31	2/4.31	5 3/4"	5		
A135-1	6'-0"	7'-0"	BB	ALUM	ANODIZE		1" INSL	1" INSL	1" INSL LAM SFTY	1/5.11	ALUM	2/5.42	9/4.32	4 1/2"	6	CARD READER RHRA
A135-2	7'-8"	7'-8"	CC	HM	PAINT		1/4" SFTY			2	HM	1/5/4.31	1/6/4.31	5 3/4"	7	DOOR AND FRAME BY OWNER
A135-3	7'-8"	7'-10"	CC	HM	PAINT		1/4" SFTY			1	HM	1/4/4.31	5/4.32	8 1/4"	8	
A136	3'-0"	7'-0"	A	SCWOOD	STAIN				2	HM	1/4.31	2/4.31	5 3/4"	9		
A137	3'-0"	7'-0"	A	SCWOOD	STAIN				2	HM	1/4.31	2/4.31	5 3/4"	10		
A138	3'-0"	7'-0"	A	SCWOOD	STAIN				2	HM	1/4.31	2/4.31	5 3/4"	10		
A139	3'-0"	7'-0"	A	SCWOOD	STAIN				2	HM	1/4.31	2/4.31	5 3/4"	10		
A140	3'-0"	7'-0"	A	SCWOOD	STAIN				2	HM	1/4.31	2/4.31	5 3/4"	10		
A141-1	8'-0"	7'-10"	AA	HM	PAINT				1	HM	22/4.31	2/4.31	5 3/4"	11		
A200	3'-0"	7'-0"	A	HM	PAINT				1	HM	7/4.31	8/4.31	5 3/4"	12		
B100-1	3'-0"	7'-0"	B	ALUM	ANODIZE		1" INSL LAM SFTY	1" INSL	1" INSL LAM SFTY	3/5.11	ALUM	1/5.43	2,3/4.33	4 1/2"	13	CARD READER, POWER OPENER, ELECTRIC STRIKE
B100-2	3'-0"	7'-0"	B	ALUM	ANODIZE		1" INSL LAM SFTY	1" INSL	1" INSL LAM SFTY	3/5.11	ALUM	1/5.43	2,3/4.33	4 1/2"	14	
B100-3	6'-0"	7'-0"	BB	ALUM	ANODIZE		1" INSL LAM SFTY	1" INSL	1" INSL LAM SFTY	3/5.11	ALUM	1/5.43	2,3/4.33	4 1/2"	15	
B100-4	3'-0"	7'-0"	B	ALUM	ANODIZE		1" INSL LAM SFTY	1" INSL	1" INSL LAM SFTY	3/5.11	ALUM	1/5.43	2,3/4.33	4 1/2"	14	
B100-5	3'-0"	7'-0"	B	ALUM	ANODIZE		1" INSL LAM SFTY	1" INSL	1" INSL LAM SFTY	3/5.11	ALUM	1/5.43	2,3/4.33	4 1/2"	14	
B100-6	3'-0"	7'-0"	B	ALUM	ANODIZE		1/4" LAM SFTY	1/4" CLEAR	1/4" LAM SFTY	11/5.11	ALUM	1/3/4.31	3,5/4/4.33	4 1/2"	14	
B100-7	6'-0"	7'-0"	BB	ALUM	ANODIZE		1/4" LAM SFTY	1/4" CLEAR	1/4" LAM SFTY	10/5.11	ALUM	1/3/4.31	5,5/4/4.33	4 1/2"	15	
B100-8	6'-0"	7'-0"	BB	ALUM	ANODIZE		1/4" LAM SFTY	1/4" CLEAR	1/4" LAM SFTY	9/5.11	ALUM	1/3/4.31	5/4.33	4 1/2"	15	
B100-9	3'-0"	7'-0"	B	ALUM	ANODIZE		1/4" LAM SFTY	1/4" CLEAR	1/4" LAM SFTY	9/5.11	ALUM	1/3/4.31	5/4.33	4 1/2"	13	CARD READER, POWER OPENER, ELECTRIC STRIKE
B100B	3'-0"	7'-0"	A	HM	PAINT				2	HM	1/4.31	7/4.33	5 3/4"	5		
B105	7'-8"	7'-10"	CC	HM	PAINT		1/4" CLEAR			1	HM	22/4.31	2/4.31	5 3/4"	8	
B106	3'-0"	7'-0"	A	SCWOOD	STAIN				2	HM	1/4.31	2/4.31	5 3/4"	10		
B109	3'-0"	7'-0"	A	HM	PAINT				2	HM	1/4.31	2/4.31	5 3/4"	9		
B110B	3'-0"	7'-0"	A	HM	PAINT				2	HM	1/4.31	2/4.31	5 3/4"	5		
B119-1	3'-0"	7'-0"	A	SCWOOD	STAIN				EXIST	HM	1/4.31	2/4.31	5 3/4"	5	RELOCATED DOOR FROM EXISTING DISHWASH, NEW FRAME	
B119-2	3'-4"	4'-4"	E	ALUM	ANODIZE				EXIST	-	-	-	-	-	RELOCATED COILING DOOR FROM EXISTING DISHWASH	
B120-1	3'-0"	7'-0"	C	SCWOOD	STAIN		1/4" SFTY		2	HM	1/4.31	2/4.31	5 3/4"	5		
B120-2	9'-2"	8'-0"	E	ALUM	ANODIZE				-	-	11/4.30	12/4.30	-	-	COILING DOOR	
B120-3	9'-2"	8'-0"	E	ALUM	ANODIZE				-	-	11/4.30	12/4.30	-	-	COILING DOOR	
B170-1	3'-0"	7'-0"	B	ALUM	ANODIZE		1/4" LAM SFTY		1/4" LAM SFTY	8/5.11	ALUM	2/5.45	1/4.33	4 1/2"	16	ELECTRIC STRIKE
B170-2	3'-0"	7'-0"	B	SCWOOD	STAIN		1/4" SFTY		1/4" SFTY	3	HM	SIM 8/4.30	SIM 7/4.30	5 3/4"	17	CUT EXISTING BURNISHED JAMB BLOCK FROM 3'-4" TO 0'-0". EASE VERTICAL EDGE OF BURNISHED BLOCK TO MATCH EXISTING ABOVE.
B174	3'-0"	7'-0"	B	SCWOOD	STAIN		1/4" SFTY		1	HM	4/4.31	6/4.31	5 3/4"	18		
B175	3'-0"	7'-0"	B	SCWOOD	STAIN		1/4" SFTY		1	HM	4/4.31	6/4.31	5 3/4"	18		
B176	3'-0"	7'-0"	B	SCWOOD	STAIN		1/4" SFTY		1	HM	4/4.31	6/4.31	5 3/4"	18		
B178	3'-0"	7'-0"	A	SCWOOD	STAIN				1/4" SFTY SPANDREL	EXIST	HM	SIM 8/4.30	9/4.33	5 3/4"	-	EXISTING DOOR AND FRAME, REPLACE SIDELITE GLAZING WITH SFTY SPANDREL
B180-1	3'-0"	7'-0"	A	SCWOOD	STAIN				1/4" SFTY	3	HM	SIM 8/4.30	SIM 7/4.30	5 3/4"	5	CUT EXISTING BURNISHED JAMB BLOCK FROM 3'-4" TO 0'-0". EASE VERTICAL EDGE OF BURNISHED BLOCK TO MATCH EXISTING ABOVE.
B181-2	3'-0"	7'-0"	A	SCWOOD	STAIN				1/4" SFTY	EXIST	HM	4/4.31	6/4.31	5 3/4"	5	RELOCATED DOOR AND FRAME



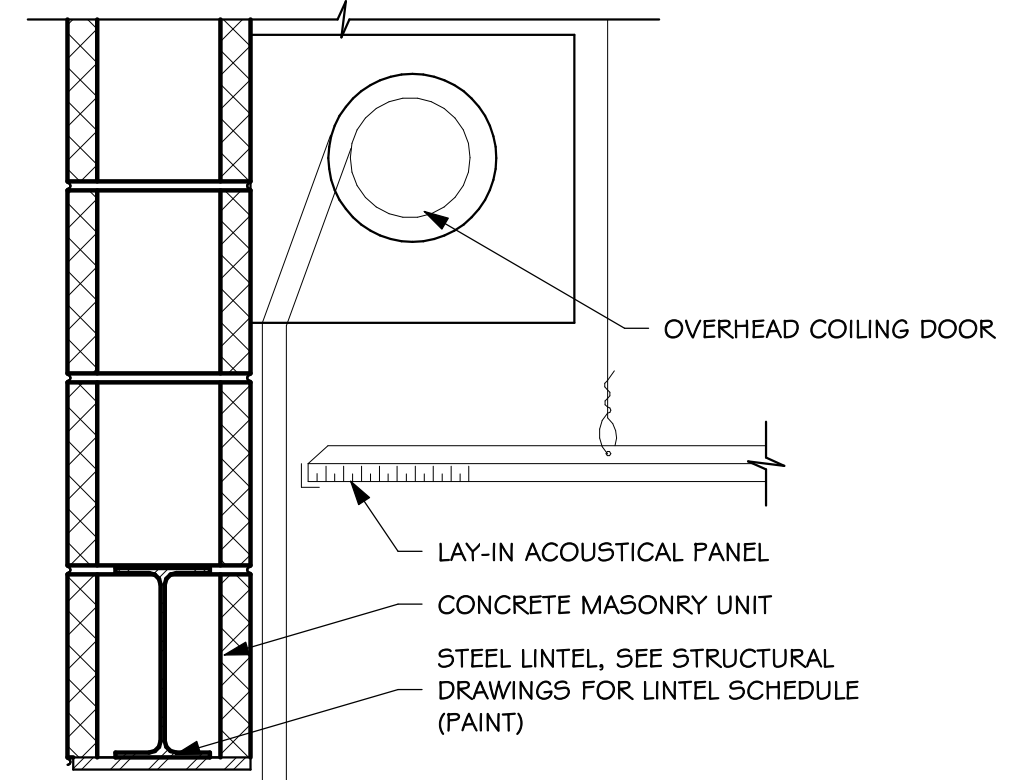
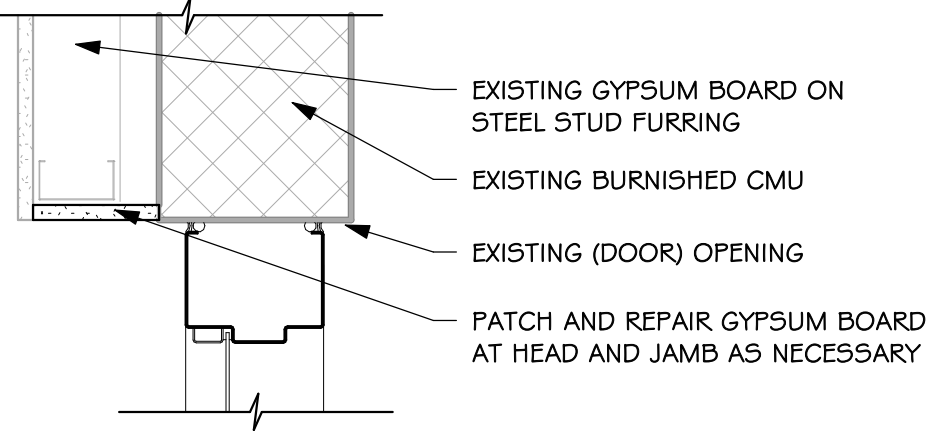
9 HEAD
4.30 SCALE: 1 1/2" = 1'-0"



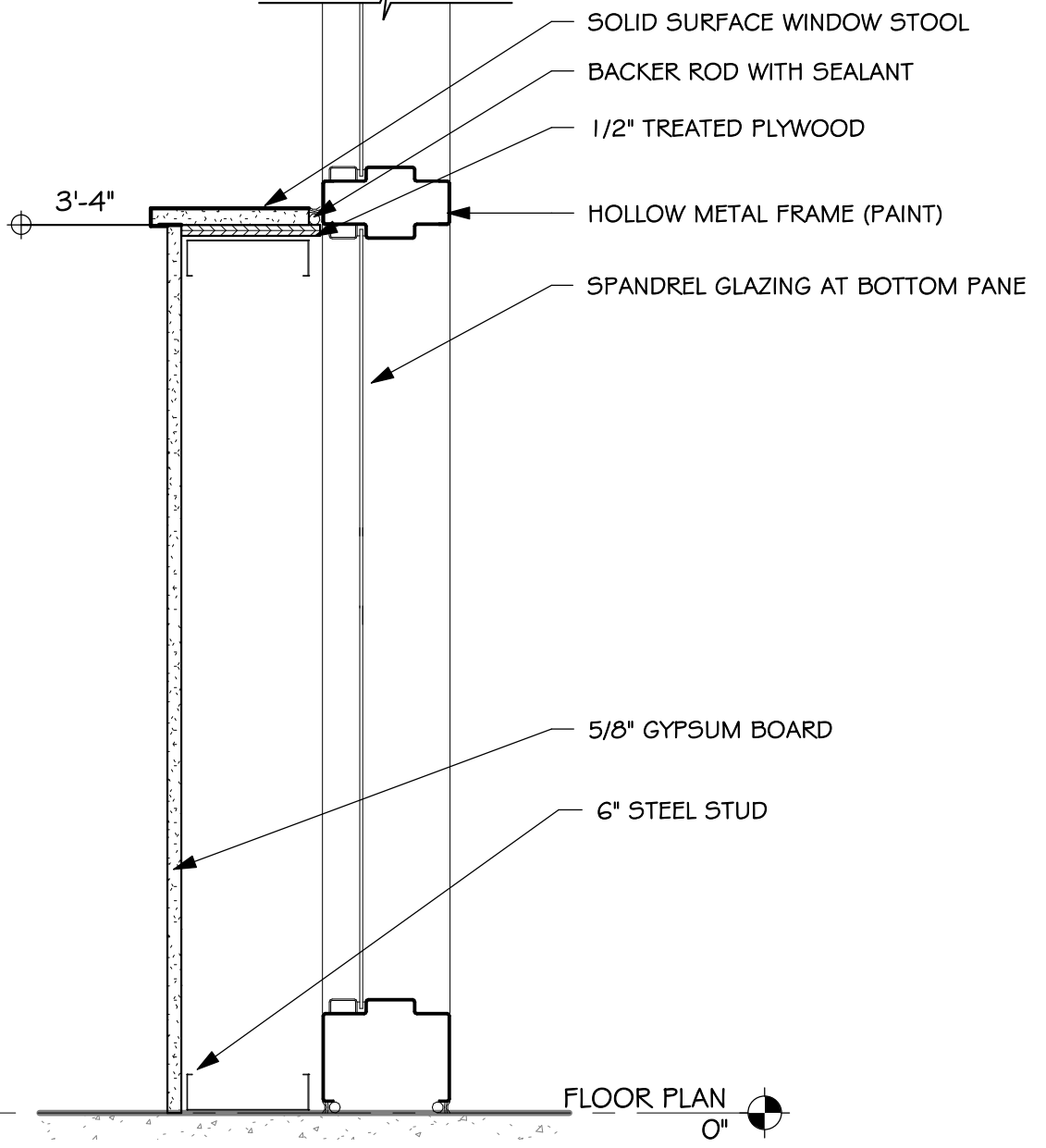
10 JAMB
4.30 SCALE: 1 1/2" = 1'-0"



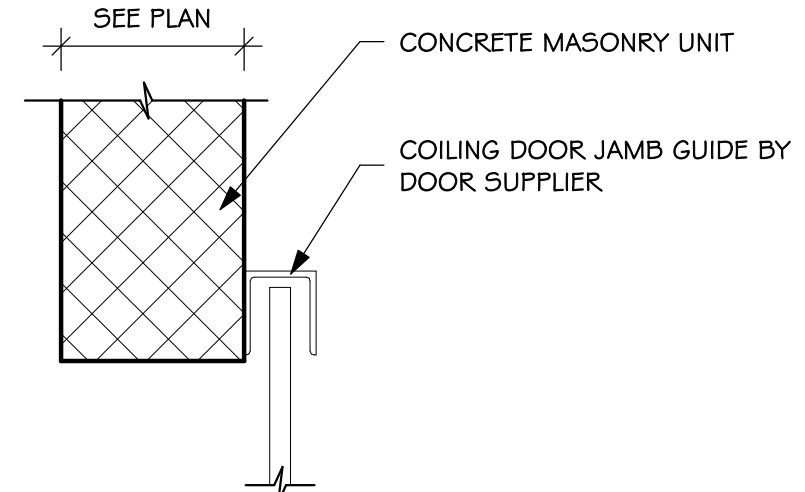
7 JAMB
4.30 SCALE: 1 1/2" = 1'-0"



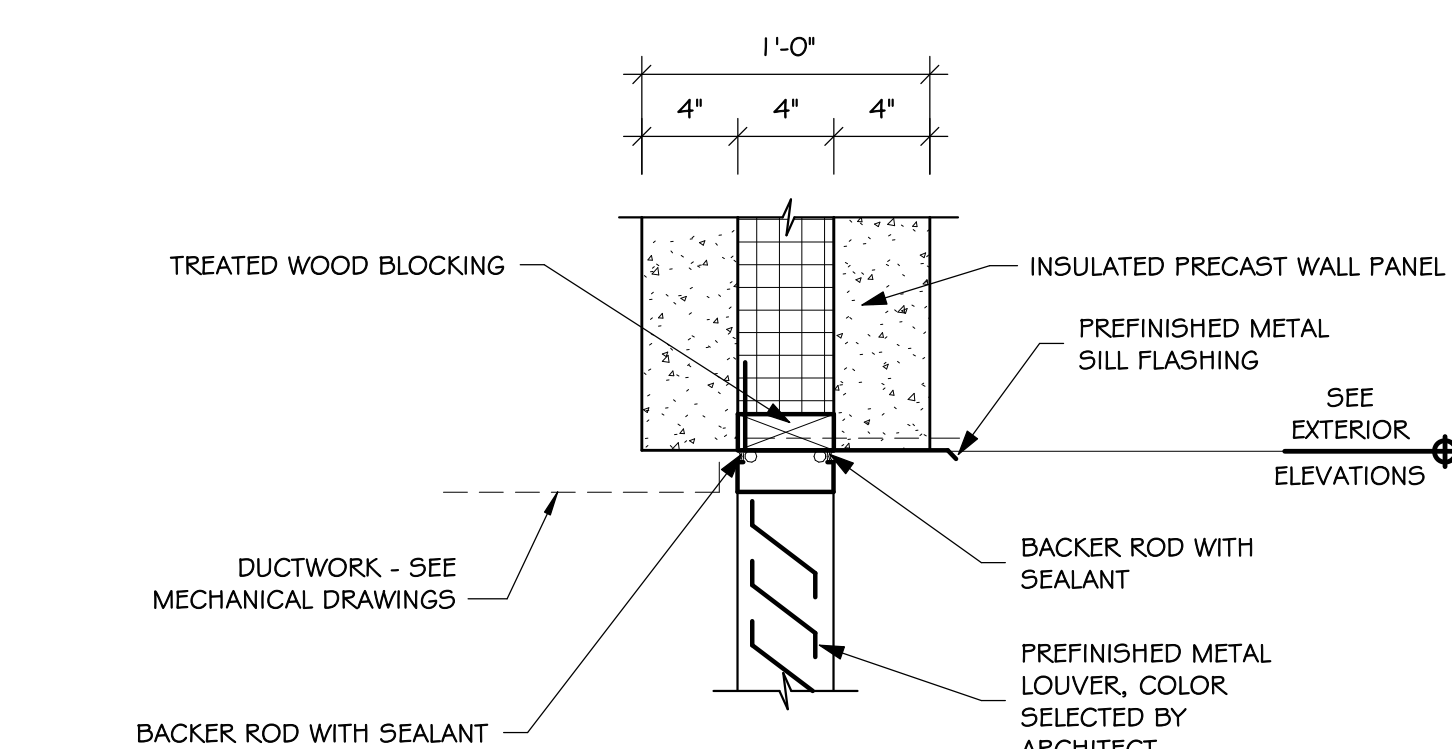
11 HEAD
4.30 SCALE: 1 1/2" = 1'-0"



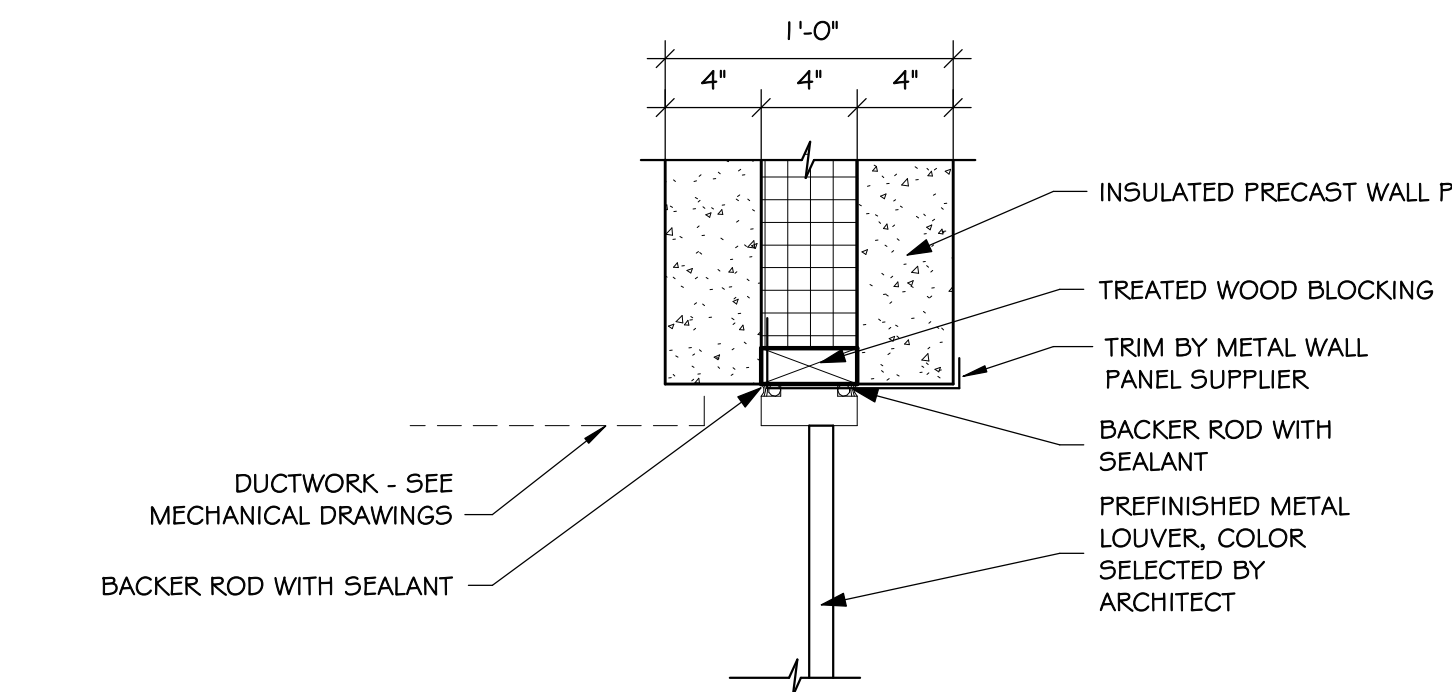
8 HEAD/SILL
4.30 SCALE: 1 1/2" = 1'-0"



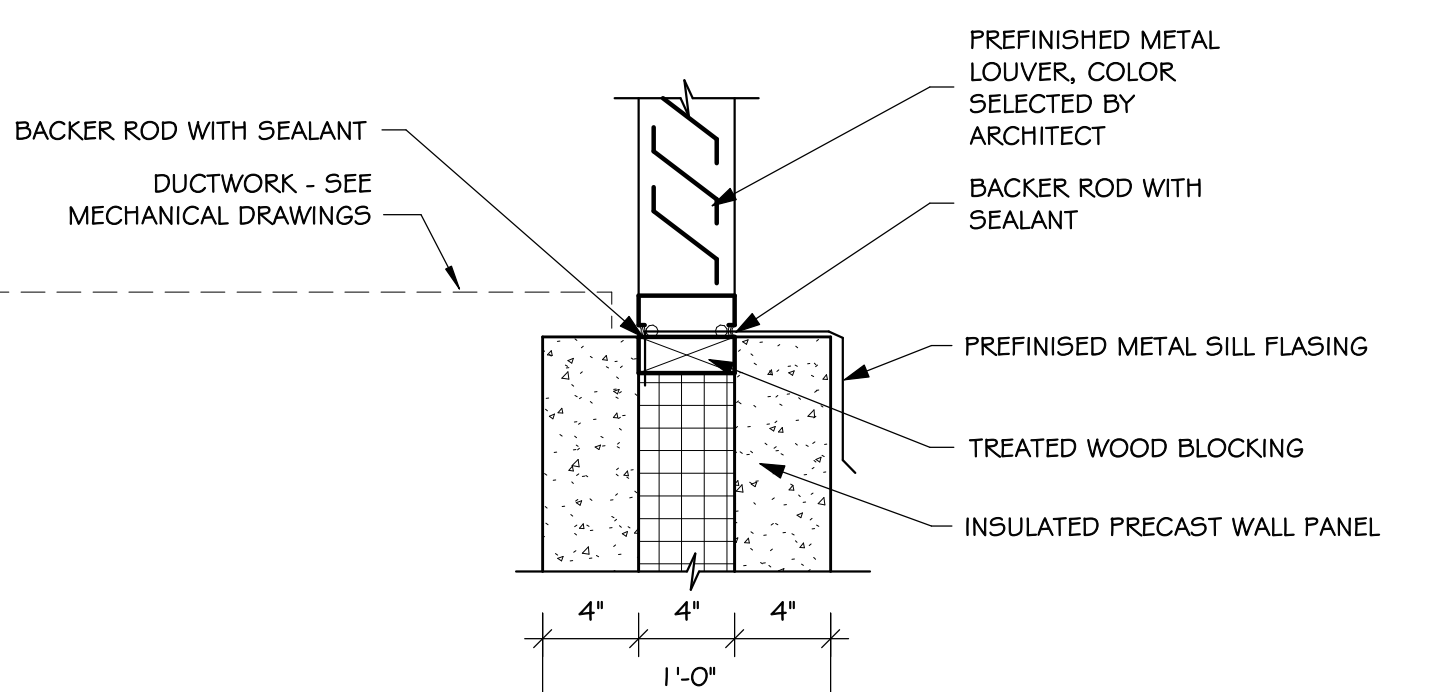
12 JAMB
4.30 SCALE: 1 1/2" = 1'-0"



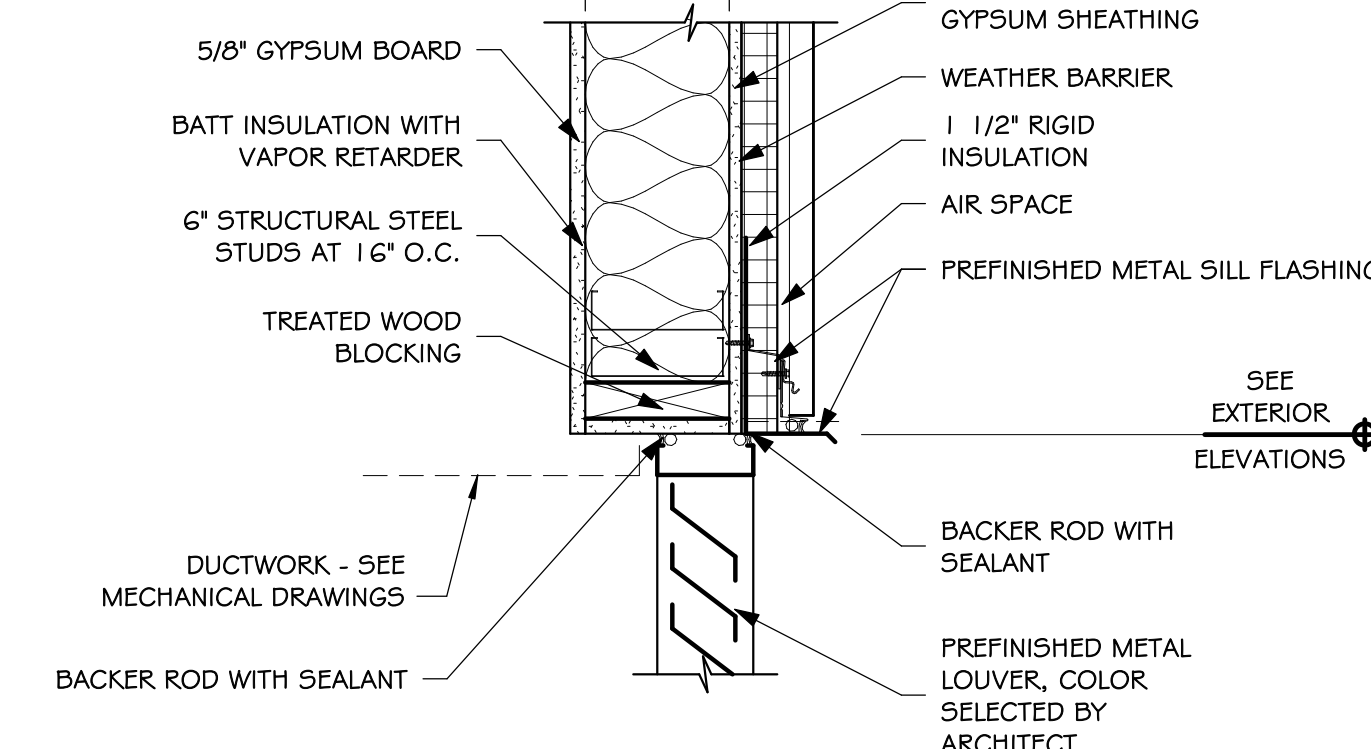
1 35 - HD - LOUVER @ PRECAST
4.30 SCALE: 1 1/2" = 1'-0"



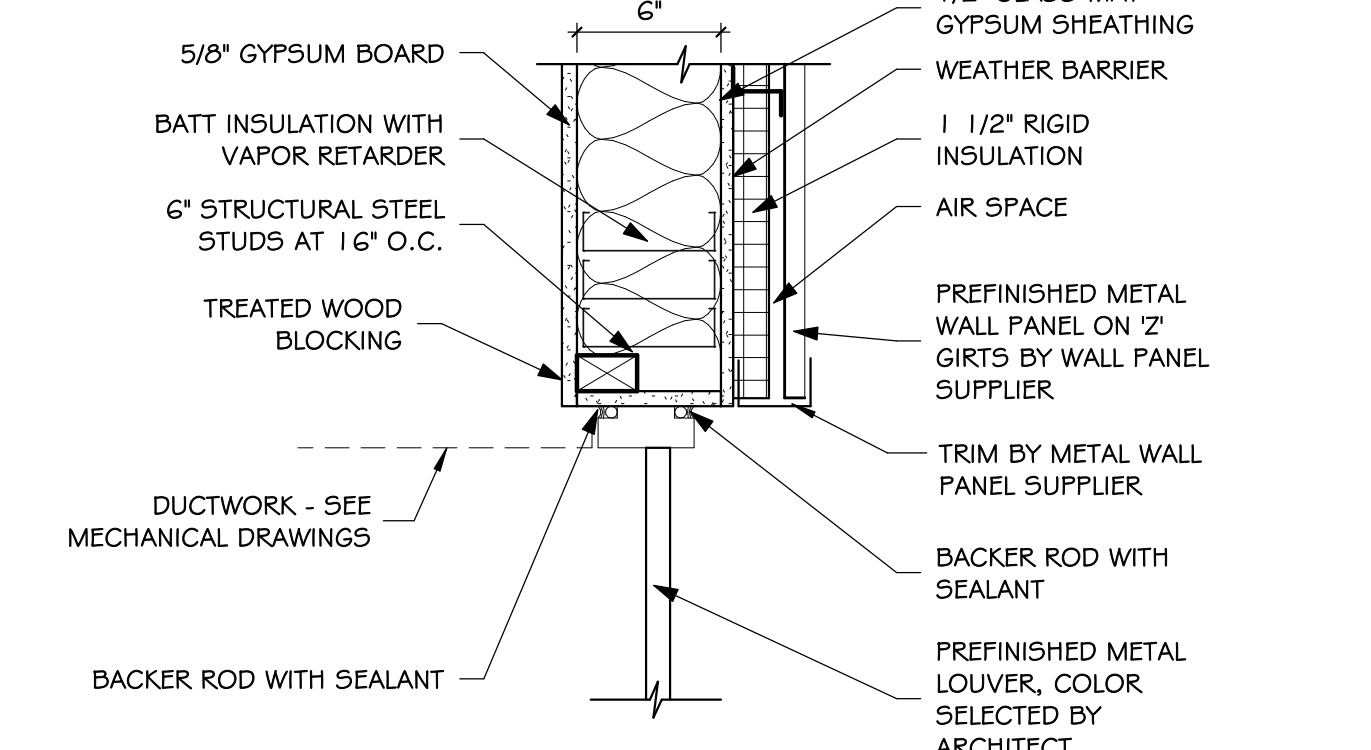
2 35 - JB - LOUVER @ PRECAST
4.30 SCALE: 1 1/2" = 1'-0"



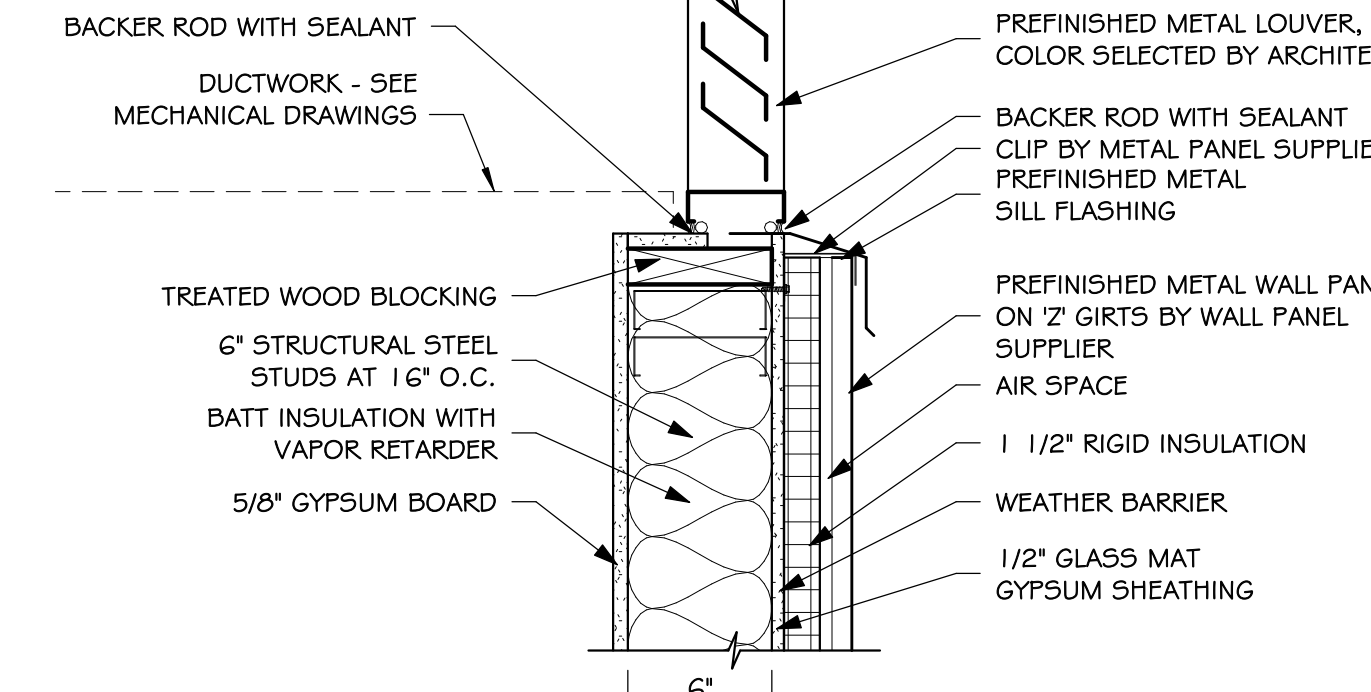
3 35 - SILL - LOUVER @ PRECAST
4.30 SCALE: 1 1/2" = 1'-0"



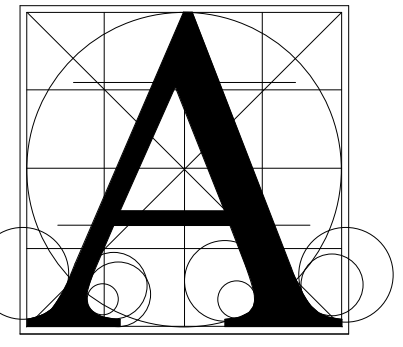
4 35 - HD - LOUVER @ STUD
4.30 SCALE: 1 1/2" = 1'-0"



5 35 - JB - LOUVER @ STUD
4.30 SCALE: 1 1/2" = 1'-0"



6 35 - SILL - LOUVER @ STUD
4.30 SCALE: 1 1/2" = 1'-0"



Architecture
Incorporated

415 South Main Avenue
P.O. Box 2140
Sioux Falls, South Dakota 57101
Phone: (605) 339-1711

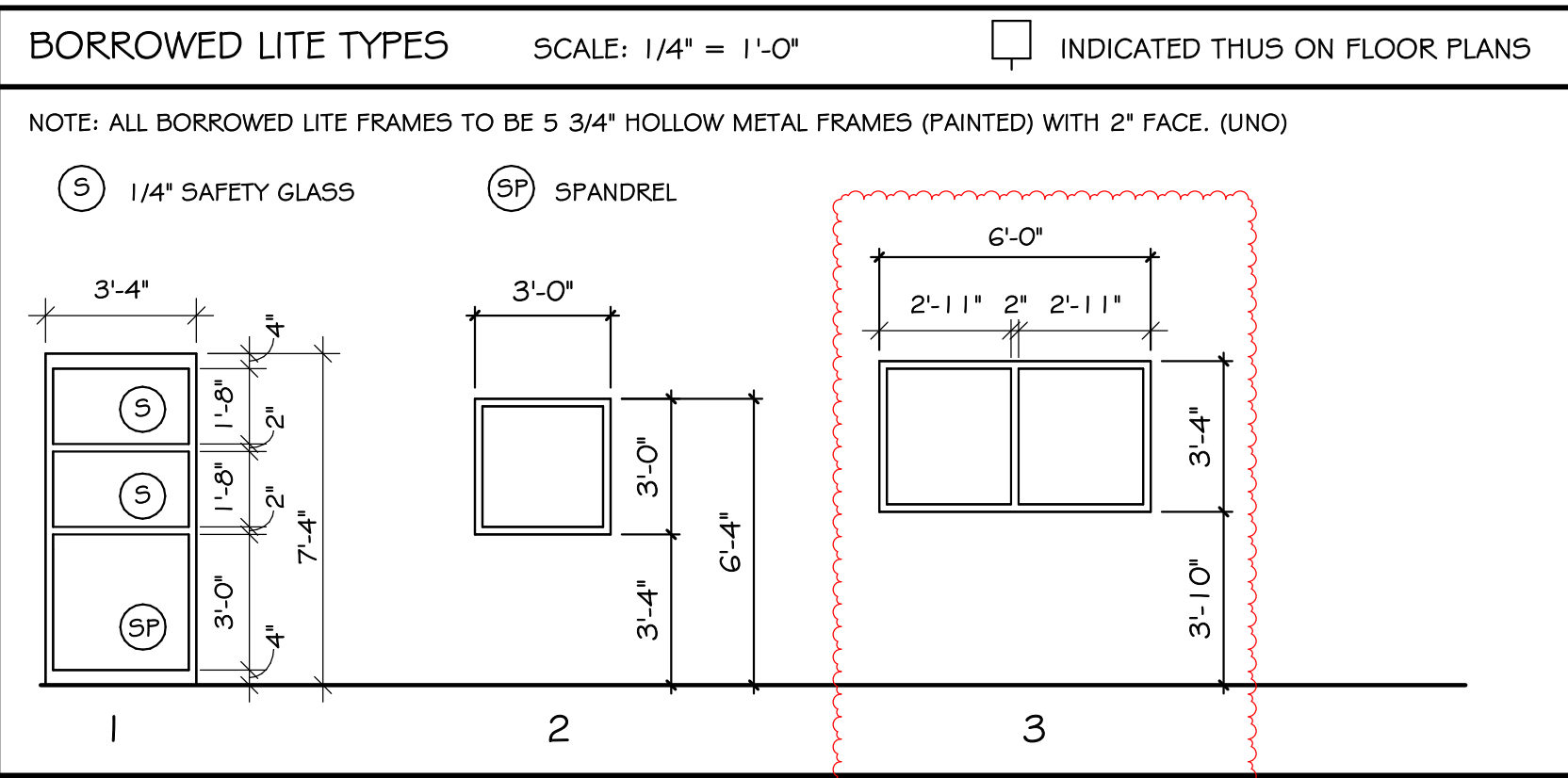
815 St Joseph Street, Suite 203
P.O. Box 8047
Rapid City, South Dakota 57701
Phone: (605) 721-1158



HARRISBURG SOUTH MS THEATRE ADDITION
DOOR SCHEDULE

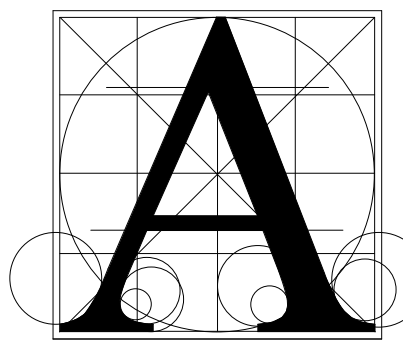
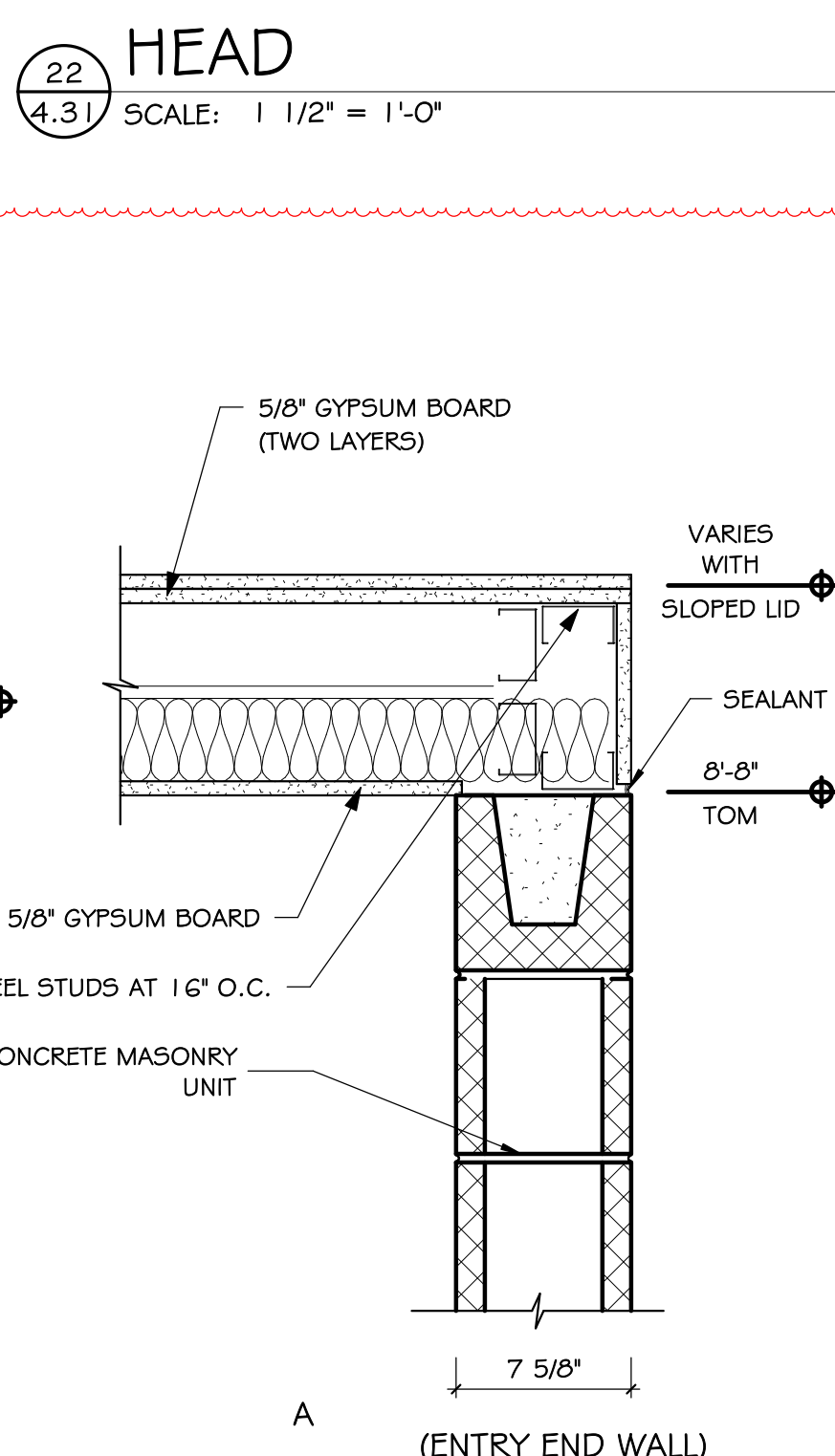
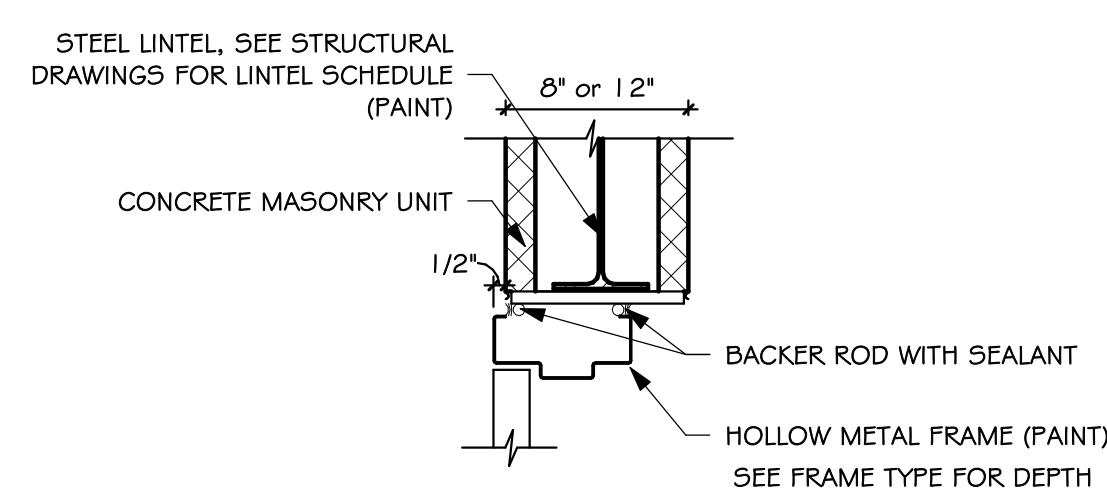
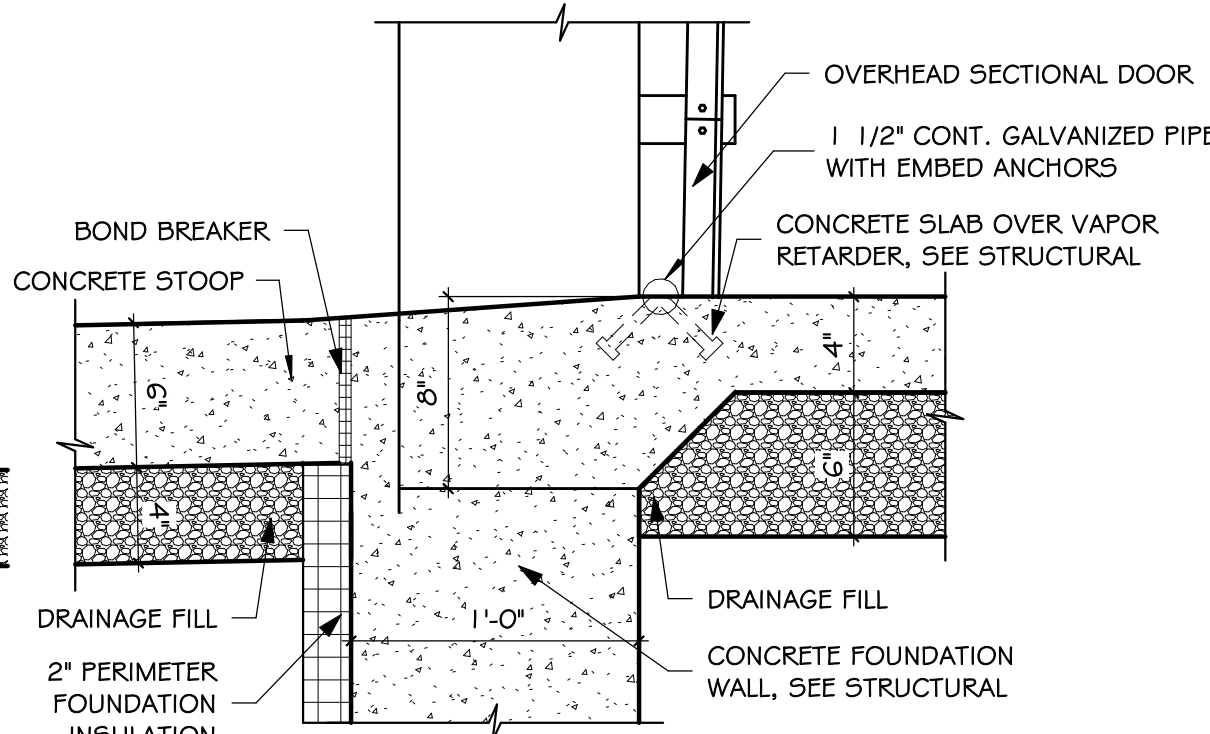
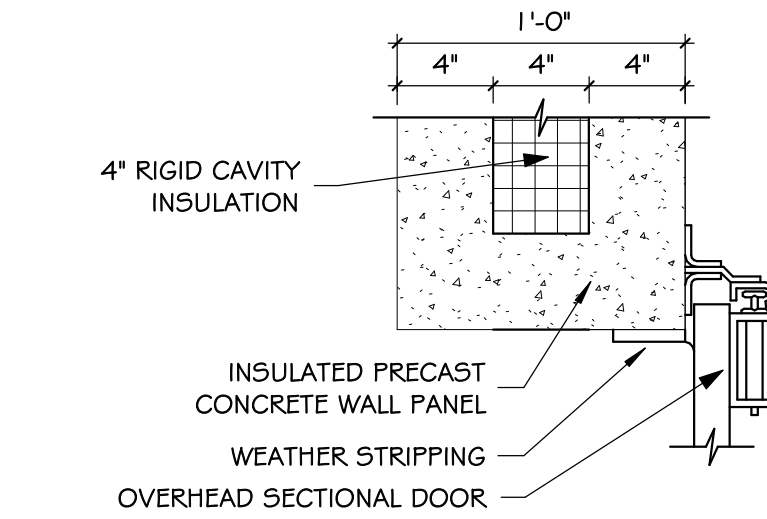
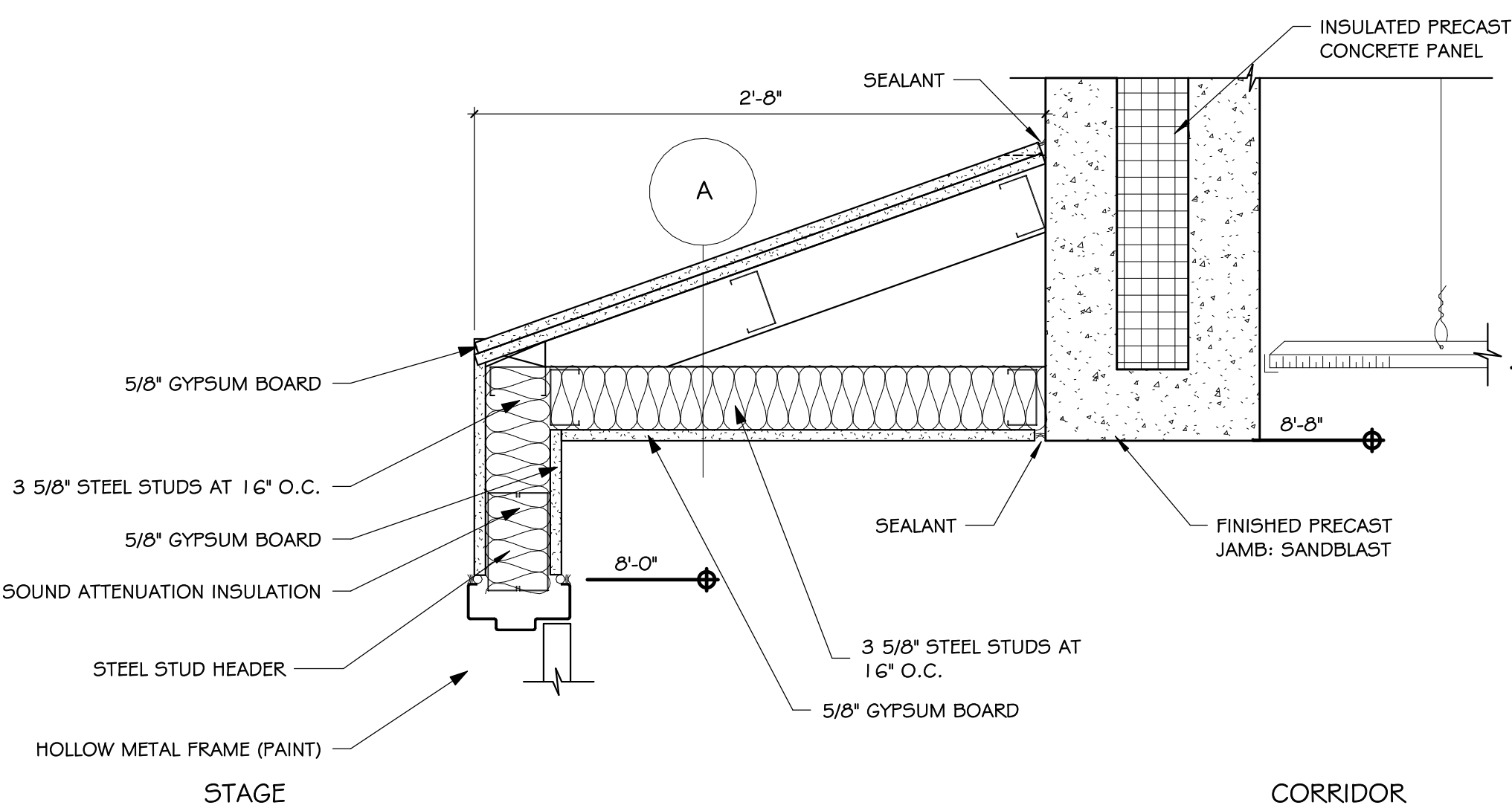
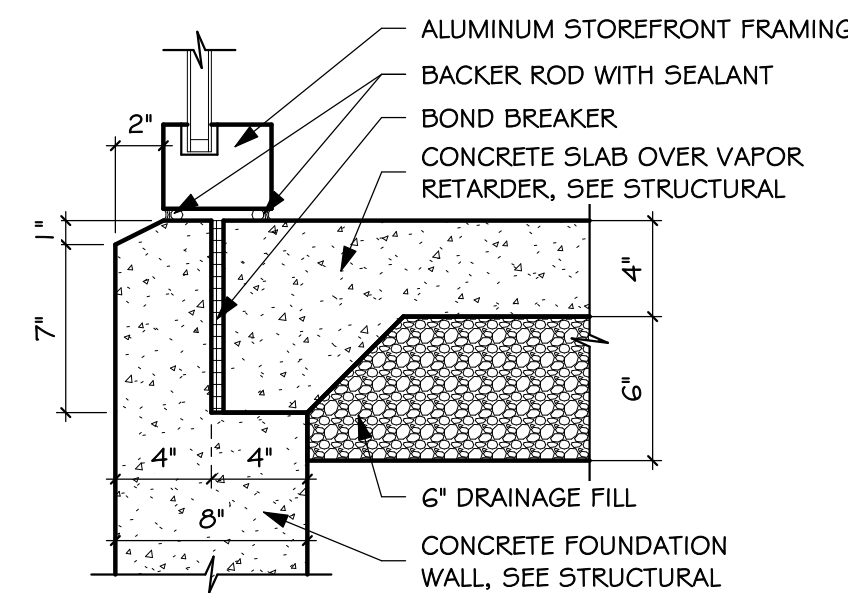
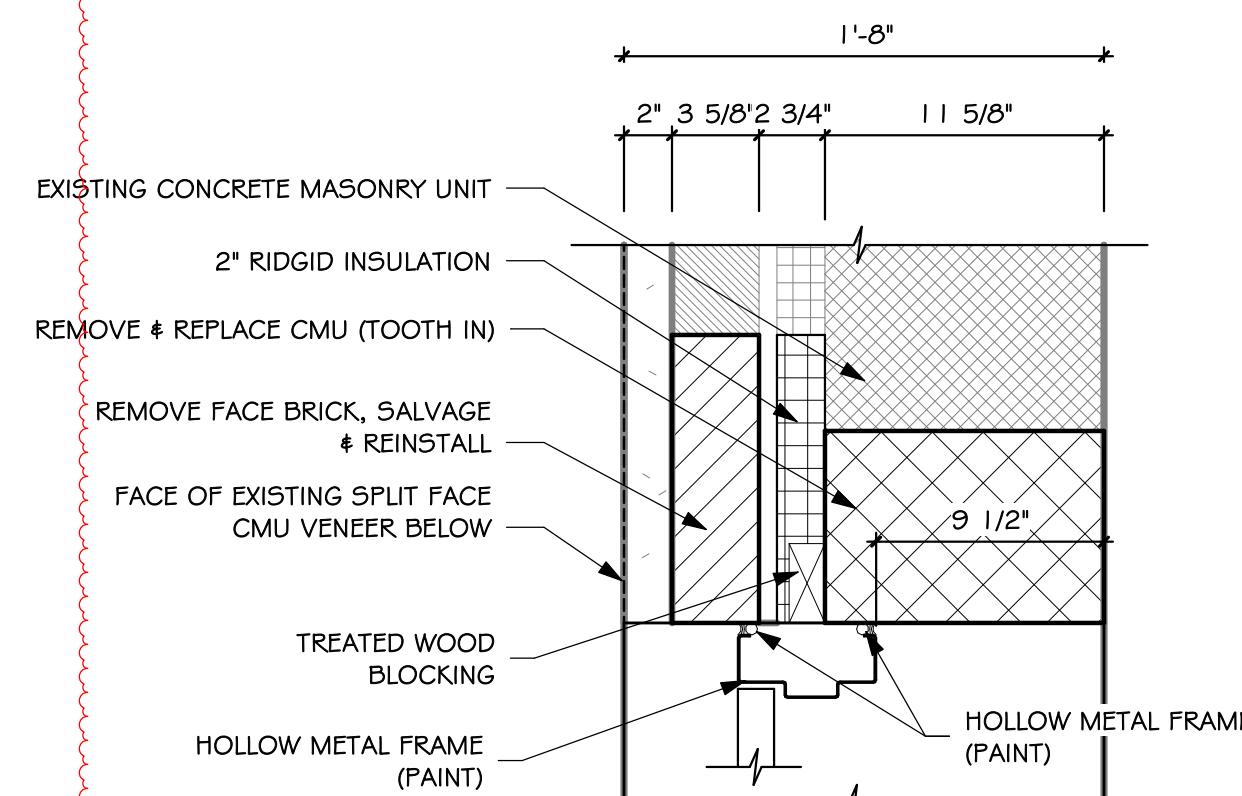
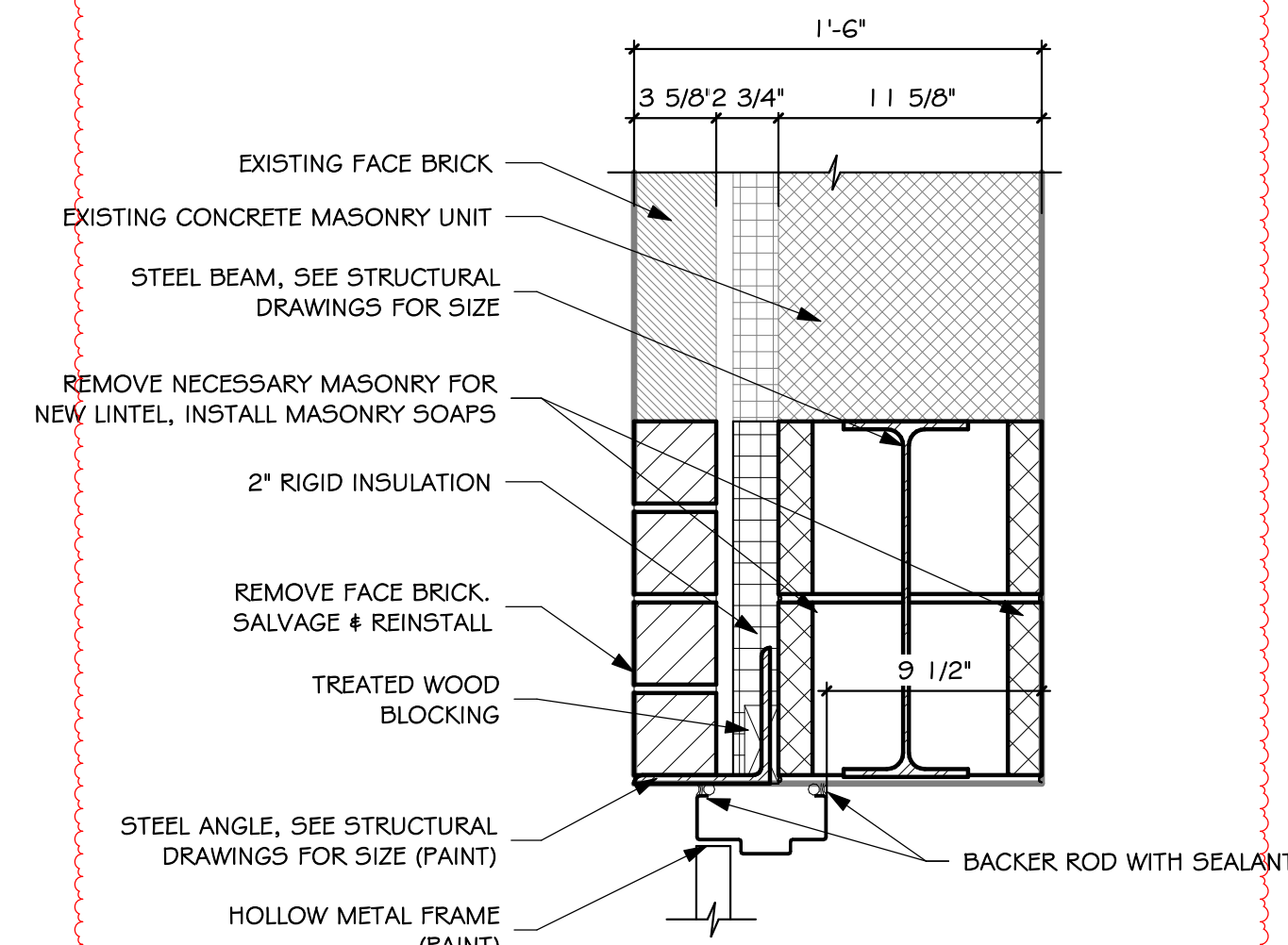
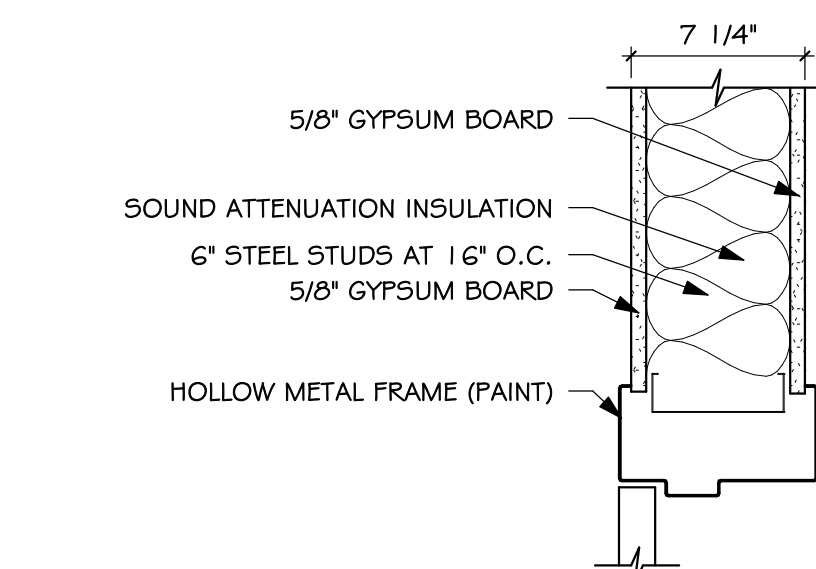
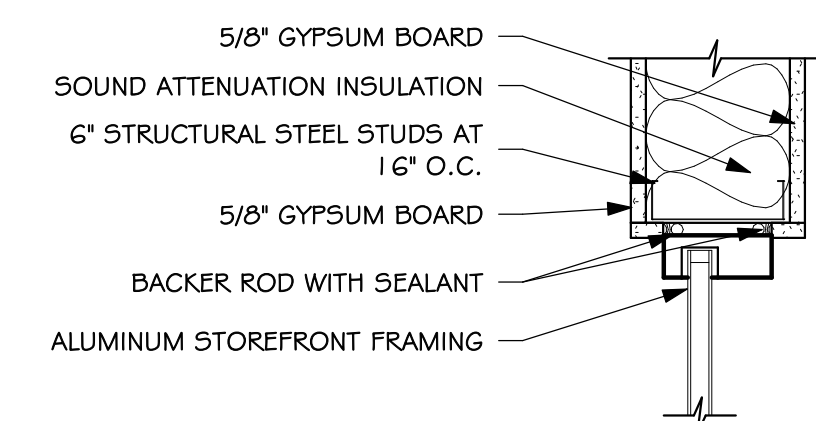
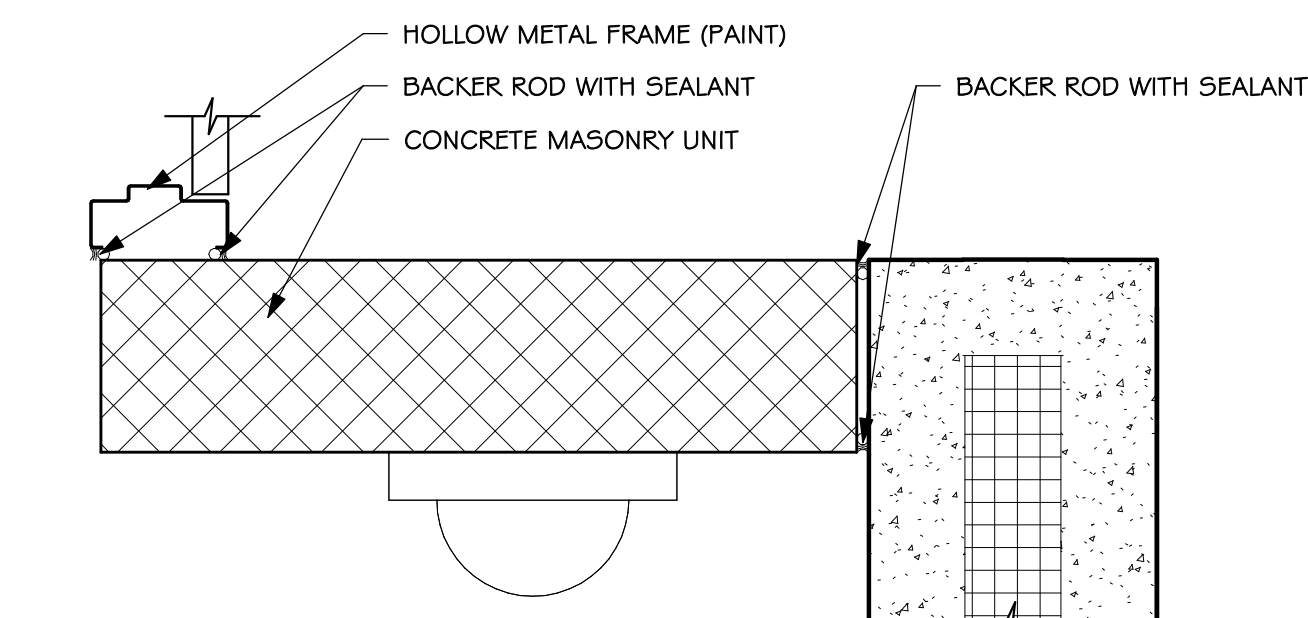
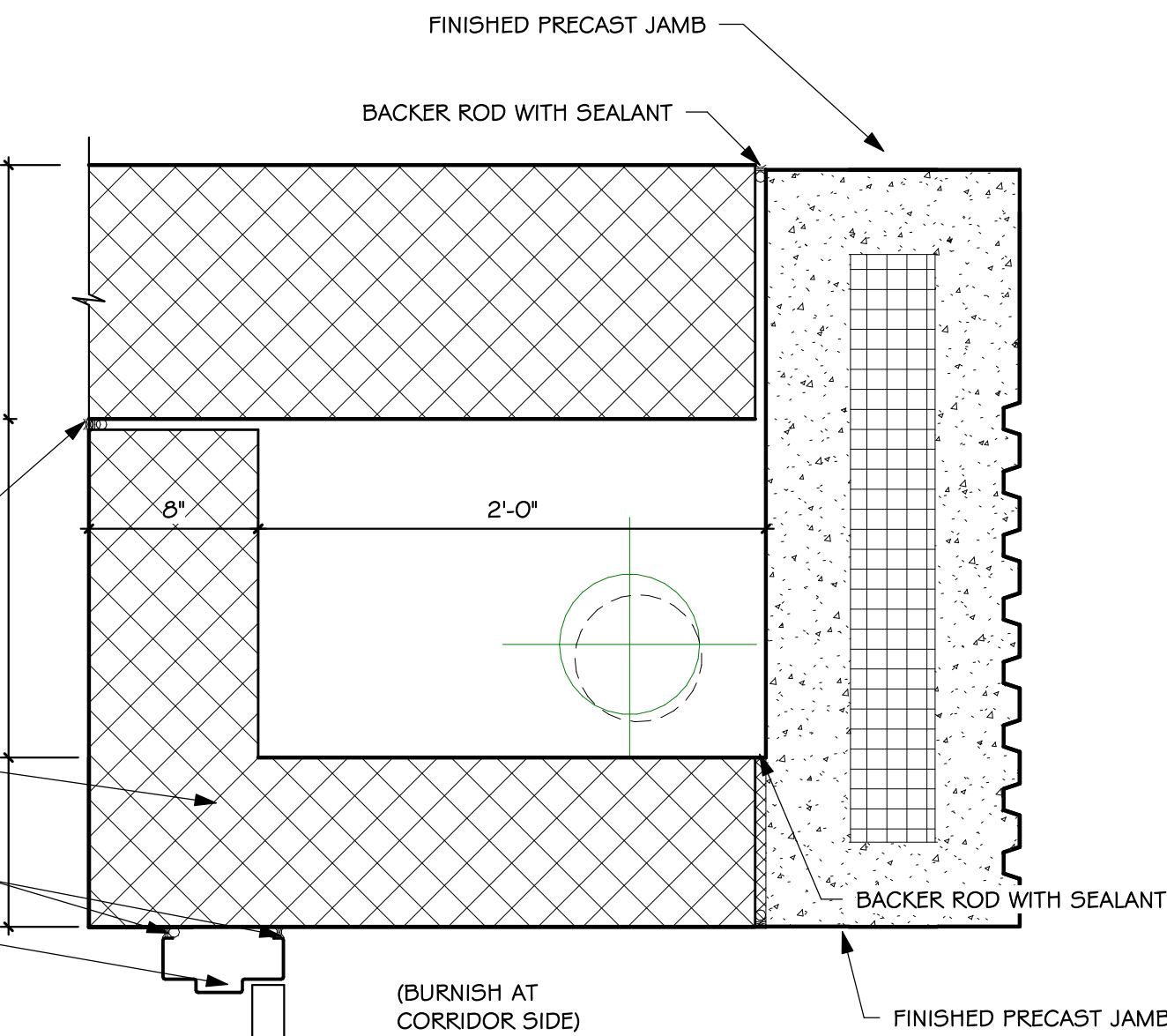
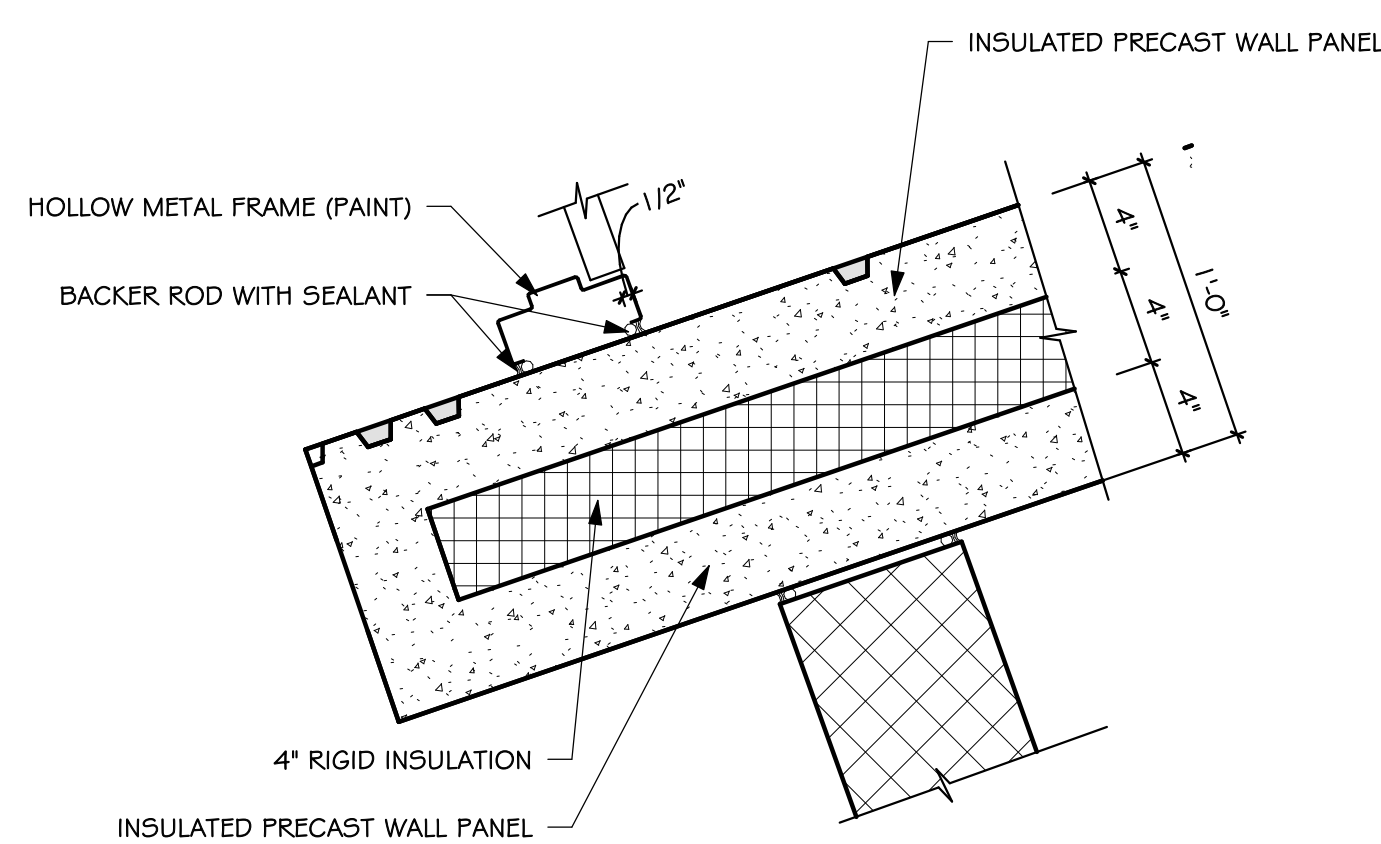
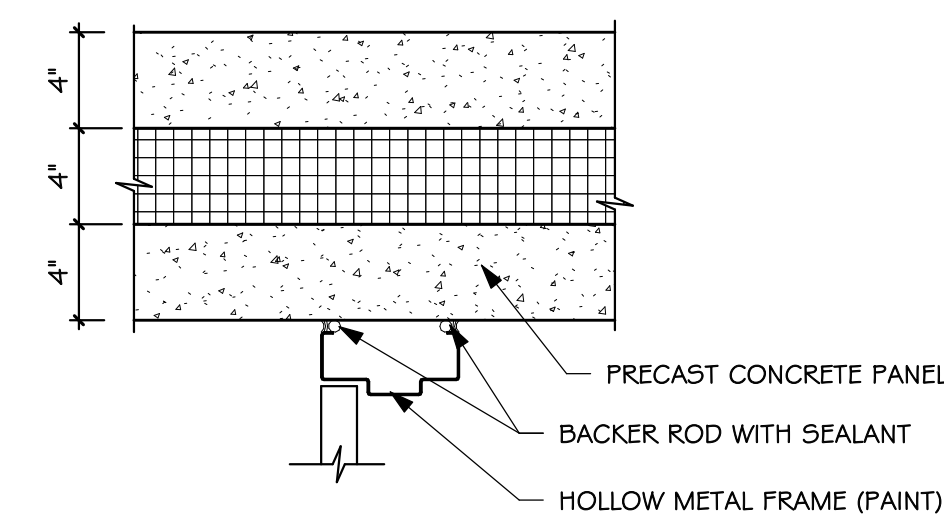
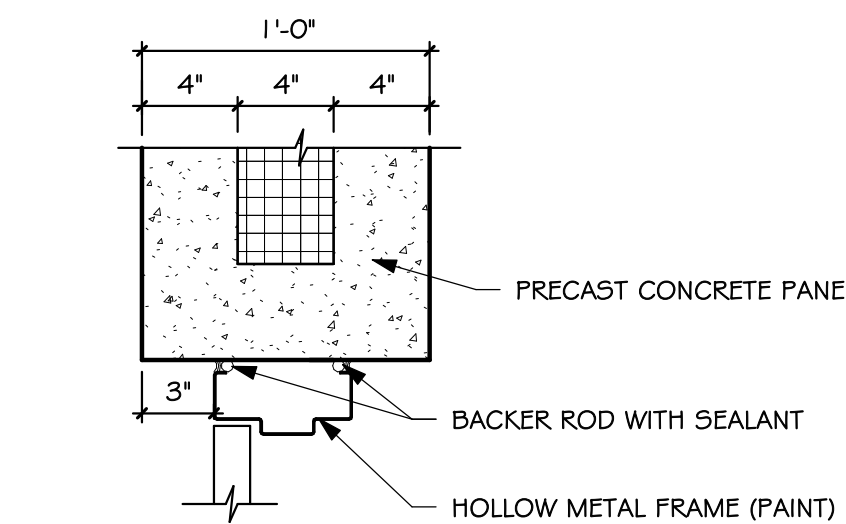
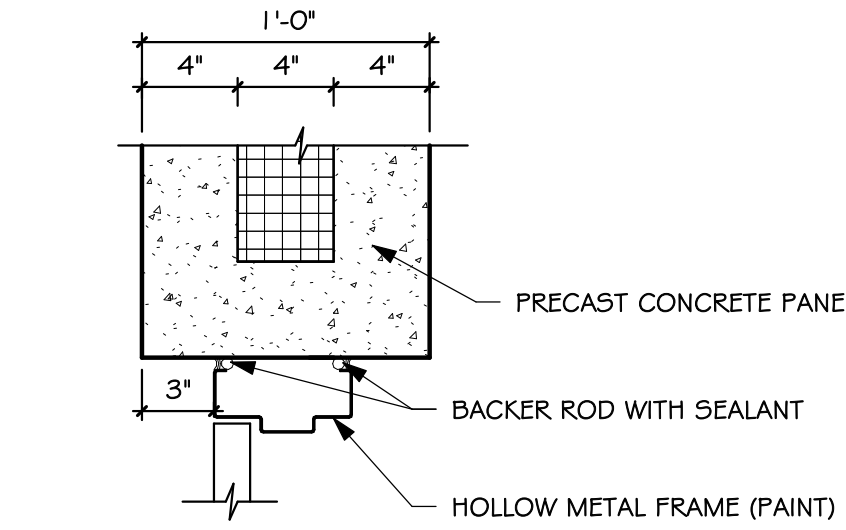
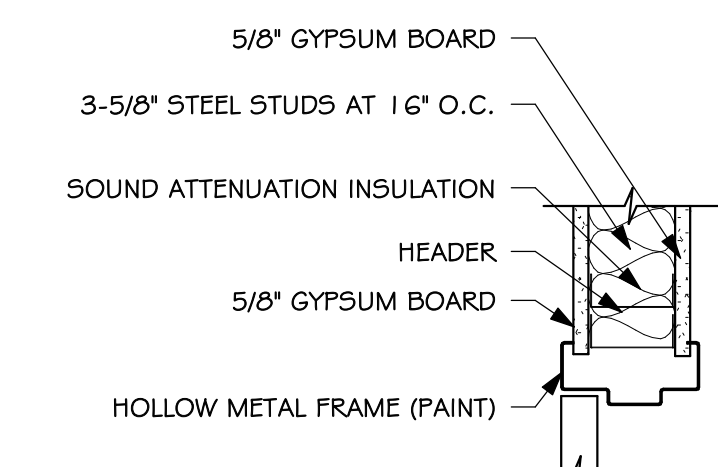
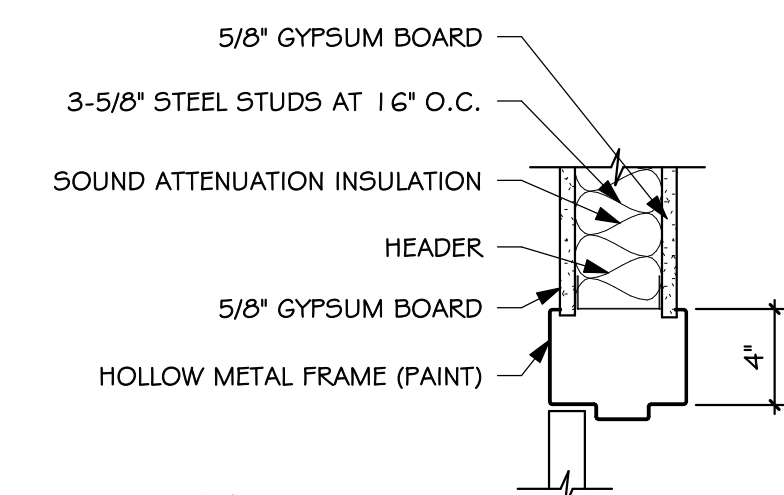
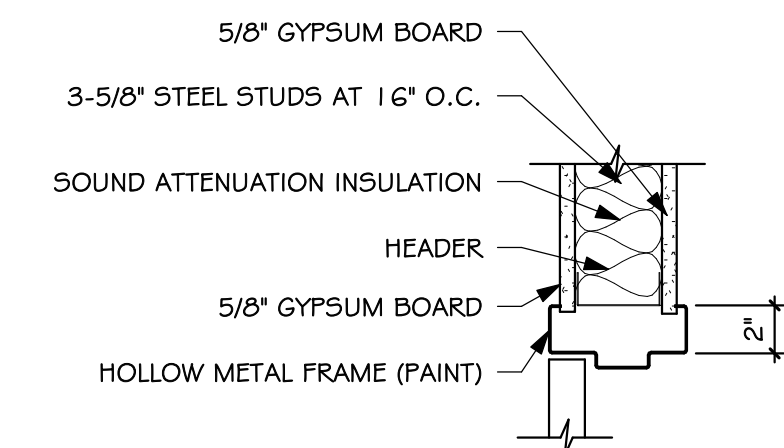
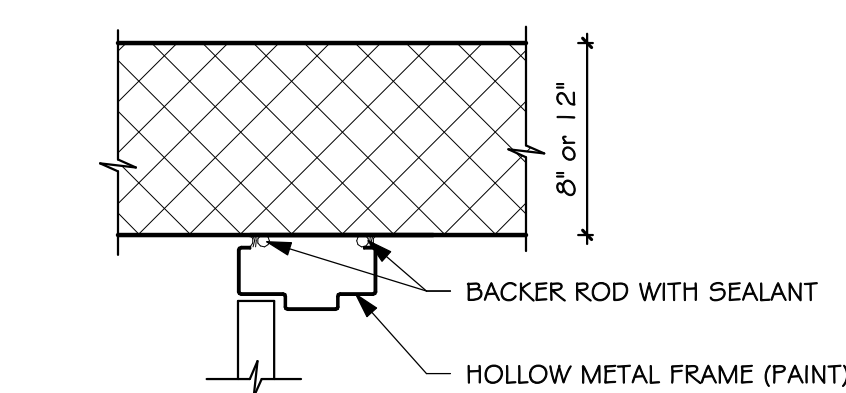
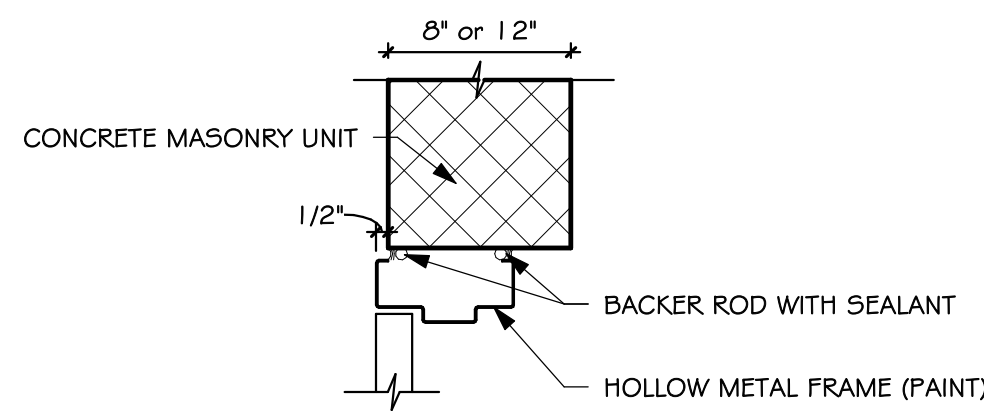
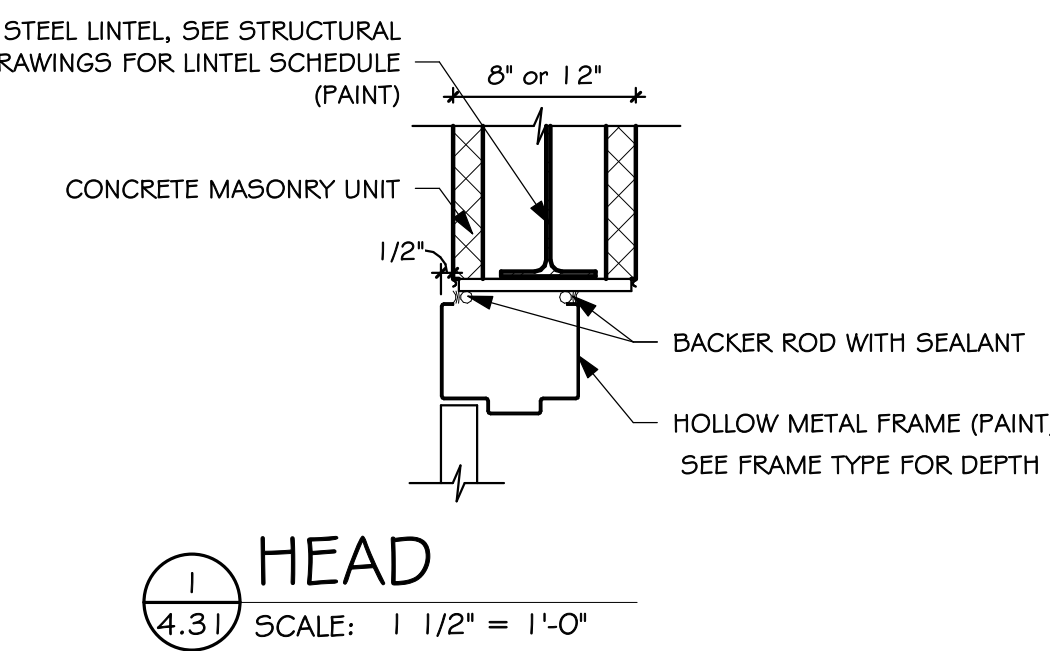
number	0306.3024.23
date	September 22, 2023
revision	
drawn	ZJG checked SKJ
NO.	DATE DESCRIPTION
2	10-27-23 APPENDUM #4

4.30



BORROWED LITE TYPES SCHEDULE						
MARK	MATL	GLASS	FIRE	HEAD DETAIL	JAMB DETAIL	SILL DETAIL
1	HM	1/4" SAFETY		8/4.30	7/4.30	8/4.30
2	HM	1/4" CLEAR		9/4.30	10/4.30	
3	HM	1/4" CLEAR		9/4.30	10/4.30	

LOWER PANE TO BE SPANDREL GLAZING
EXISTING RELOCATED



Architecture
Incorporated

415 South Main Avenue
P.O. Box 2140
Sioux Falls, South Dakota 57101
Phone: (605) 339-1711

815 St Joseph Street, Suite 203
P.O. Box 8047
Rapid City, South Dakota 57701
Phone: (605) 721-1158



HARRISBURG SOUTH MS THEATRE ADDITION

DOOR DETAILS

number	0306.3024.23	
date	September 22, 2023	
revision		
drawn	ZJG	checked SR
NO.	DATE	DESCRIPTION
2	10-27-23	ADDENDUM #4

4.31