

Addendum No. 2
August 26, 2022

Project name: Health Sciences Surgical Simulation Suite Renovation
University of South Dakota
Sanford School of Medicine
OSE #R0622—05X
Architecture Incorporated Project #:0217.2984.22

Architect: Architecture Incorporated

Letting: Date: Tuesday, August 30, 2022
Time: 3:30 p.m. CT
Office of the State Engineer, Joe Foss Building, in Pierre, SD.

Scope of this Addendum:

To all bidders and all others to whom drawings and specifications have been issued by Architecture Incorporated, this Addendum forms a part of the Contract Documents. Acknowledge receipt of this addendum by listing its number and date in the bidder's Form of Proposal. Failure to do so may subject bidder to disqualification. This addendum modifies the drawings and specifications as follows:

GENERAL ITEMS:

- 1) **BID FORM CLARIFICATION:** The total taxable value of materials furnished by the State for this project is \$50,000.
- 2) **SPECIFICATION SECTION – 087100 – DOOR HARDWARE**
 - a) **CLARIFICATION:** All new rim exit devices to have cylinder dogging. Core to be provided by owner.
 - b) **CLARIFICATION:** Single card reader device at doors L07 and L09 to control the electric strike both doors at each pair.
 - i) Reference attached Door Card Access Control Details for additional information regarding rough-in installation and cabling.
 - c) Add the following information for Electric Strikes.
 - A. Electric Strikes: BHMA A156.31; Grade 1; with faceplate to suit lock and frame.
 1. Manufacturers: HES 9600 Electric Strikes as required for hardware and fire rating type.
 2. Material: Steel.
 3. Mounting: Mortised.
 4. Fire-Rated Door Assemblies: Use fail-secure electric strikes with fire-rated devices.

- d) 3.6 Door Hardware Schedule
 - i) Hardware Group #1:
 - (1) Rim exit devices, classroom function
 - (2) Closers w/ cush stop
 - (3) Kick plates
 - (4) Electric strikes
 - (5) Card readers by owner
 - (6) Electrified Removable Mullion
 - (a) Equal to Von Duprin keyed removable mullion, with two (2) electric strikes; steel, painted to match hollow metal frame paint finish color. Key cylinder to be furnished and installed by the Contractor.
 - (i) Core provided by Owner
 - (ii) Provide 'quick disconnect' for wiring connections.
 - (7) Door Position Switch – one per leaf
 - (a) Basis-of-Design: Interlogix 1078
 - (8) Request to Exit Device – one per pair of doors
 - (a) Basis-of-Design: Bosch DS160 Series High Performance Detector
 - (9) Salvage and reinstall butt hinges from doors L07, L09 and L09H
 - (10) Reference Item 3.a below for clarification on salvaged rim exit devices and kick plates.
 - ii) Hardware Group #3
 - (1) Butt Hinges (salvaged from existing door L07J)
 - (2) Closure w/ hold open
 - (3) Provide oversized push plate at each leaf.
 - (4) Provide bar pull with oversized beauty plate at each leaf.

3) SPECIFICATION SECTION – 101100 – VISUAL DISPLAY UNTIS

- a) Section 2.3.C.6: Omit the map rail on the markerboards. Map rails will not be required on the marker boards.

4) DRAWING SHEET 4.30

- a) Door L07:
 - i) Install salvaged rim exit devices and kick plates from existing doors L07 and L09.
 - ii) Modify Additional Notes to read 'Card Reader, Electrified Removable Mullion, Electric Strike, Salvage Door Leaf from L07'.
- b) Door L09:
 - i) Provide and install new rim exit devices and kick plates.
 - ii) Modify Additional Notes to read 'Card Reader, Electric Strike, Electrified Removable Mullion, Salvage Door Leaf from L09D / L09G'.
 - iii) Provide auxiliary trim plates as necessary to cover existing cylindrical lock hardware preps.
- c) Door L07C
 - i) Modify Additional Notes to read 'Salvage Hollow Metal Frame and Door Leafs and butt hinges from L07J'.
 - ii) Modify existing type 'A' door leafs; install new lite kit and glazing for type 'C' configuration.
 - iii) Provide new hardware per Hardware Group #3.

MECHANICAL ITEMS:

5) **DRAWING SHEET 8.31 – LOWER LEVEL FLOOR PLAN – PLUMBING & HEATING**

1. Modify piping to SK-1 in rooms L09A and L09E as shown on revision sheet 8.31, Addendum #2, dated 8-26-22.
2. Add Plumbing and Heating Note 6 and 7 as shown on revision sheet 8.31, Addendum #2, dated 8-26-22.

ELECTRICAL ITEMS:

6) **ELECTRICAL DRAWING SHEET 9.21 - PARTIAL LOWER LEVEL FLOOR PLAN – POWER & SIGNAL**

1. In reference to the telecom system, provide the following modifications:
 - a. Change to Panduit Min-com connectivity and General Cable (Prysmian) Cat.6 cable.
 - b. ALL data/camera cable is to route into the existing data closet L16 in the lower level, not SERVER L08A. Room L16 is located on the north side of the northeast stairwell in the lower level (highlighted in blue below).
 - c. In Room L08A, the slide-out rack shall be provided by AVI. Provide (16D) data drops in new room SERVER L08A in lieu of (8D).
 - d. Add 12-strand MM fiber in raceway between the new room SERVER L08A and the Parry Center data room L46. Provide 20' service loops on each end – Approx. total fiber length of 200FT.



GENERAL APPROVALS:

The following material or equipment furnished by the manufacturers listed, may be substituted as equivalent providing that each item, material, and piece of equipment conforms to the design and requirement of the specifications.

<u>SECTION</u>	<u>ITEM</u>	<u>MANUFACTURER</u>
123216	Institutional Casework	Maloney, Inc.

END OF ADDENDUM

CONTRACTOR SHALL PROVIDE ALL
REQUIRED LOW VOLTAGE WIRING
FROM THE ACCESS CONTROL PANEL
TO THE DOOR(S).

STUB OUT WITH 4X4 BOX ABOVE
ACCESSIBLE CEILING SPACE

MULTI-CONDUCTOR
CABLE

CEILING

DOOR POSITION
SWITCH

1/2" EMT CONDUIT STUBBED
INTO DOOR FRAME

3/8" FLEXIBLE STEEL CONDUIT IN
WALL SPACE TO DOOR JAMB.
ELECTRIC LOCK, ELECTRIC STRIKE,
LATCH POSITION SWITCH, DOOR
POSITION SWITCH

LATCH POSITION
SWITCH

DOOR
HARDWARE

ELECTRIC LOCK

ELECTRIC STRIKE

CARD READER, REX

CARD READER BY USD

REX BY G.C.

48"

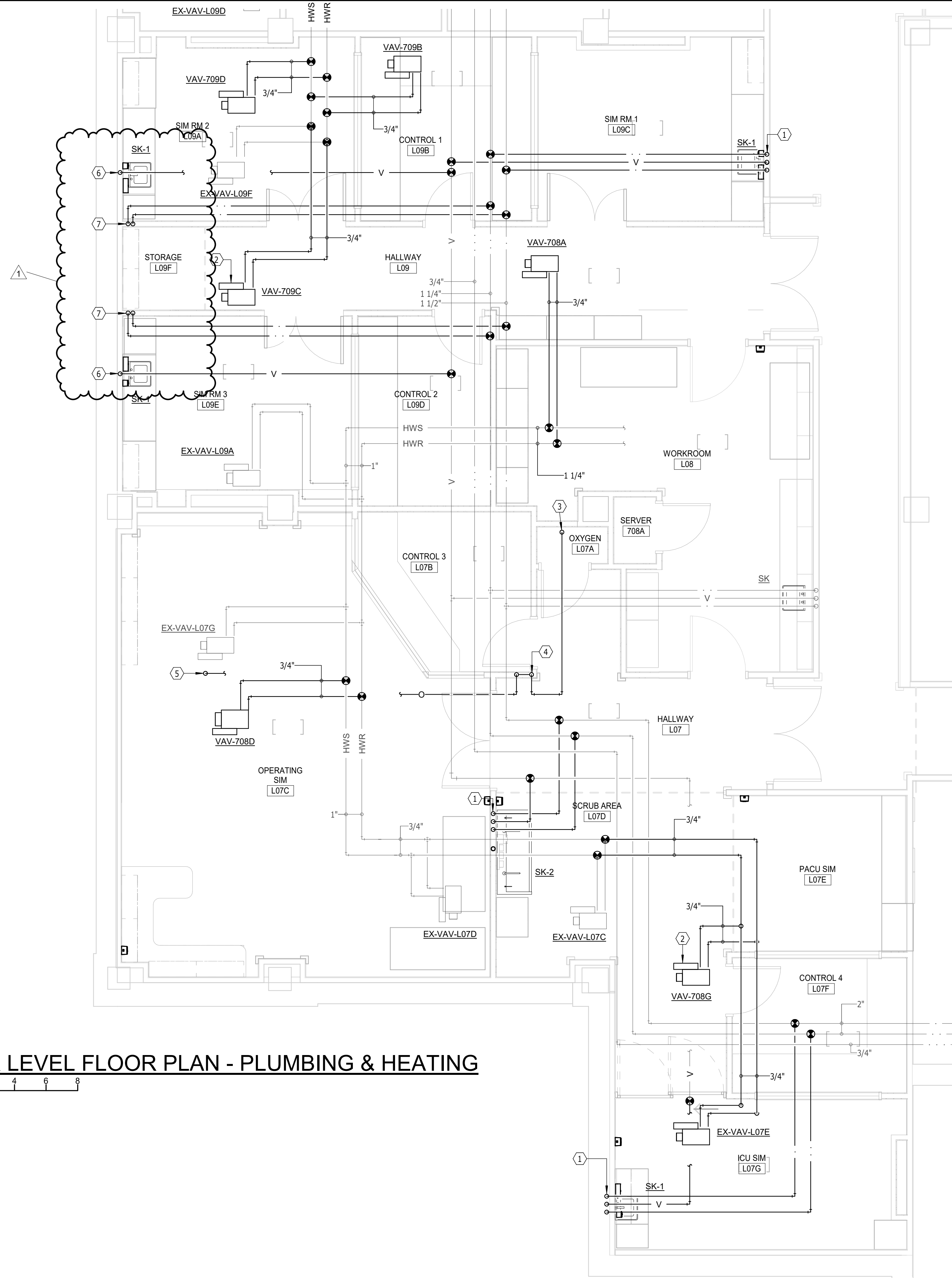
FLOOR

NOTE:

1. COORDINATE REQUIREMENTS WITH DOOR HARDWARE SUPPLIER AND ACCESS CONTROLS SUPPLIER. ELECTRICAL CONTRACTOR SHALL PROVIDE CONDUITS, LOW VOLTAGE WIRING, AND BOXES.
2. COORDINATE INSTALLATION OF DOOR HARDWARE WITH GENERAL CONTRACTOR AND PROVIDE ALL WIRING AND CONNECTIONS TO DOOR HARDWARE.
3. CARD READERS, MASTER DOOR CONTROLLER, AND SATELLITE DOOR CONTROLLERS WILL BE SUPPLIED BY OWNER AND SHALL BE INSTALLED BY ELECTRICAL CONTRACTOR.
4. ELECTRICAL CONTRACTOR SHALL PROVIDE ALL ELECTRICAL CONNECTIONS (LINE VOLTAGE AND LOW VOLTAGE) REQUIRED TO DOOR HARDWARE AND ACCESS CONTROLS DEVICES.
5. DETAIL IS DIAGRAMMATIC TO SHOW SAMPLE CONNECTIONS AT MAJORITY OF DOORS. SOME DEVICES MAY NOT BE REQUIRED AT EVERY DOOR. REFER TO ELECTRONIC DOOR HARDWARE LISTING FOR SPECIFIC REQUIRMENTS.
6. WIRING REQUIREMENTS:
 - A. CARD READER - 22/6 TWISTED, STRANDED, SHIELDED
 - B. ELECTRIC STRIKE - 16/2 TWISTED, STRANDED, SHIELDED
 - C. REQUEST TO EXIT - 20/4 TWISTED, STRANDED, SHIELDED
 - D. DOOR POSITION SWITCH - 22/2 TWISTED, STRANDED, SHIELDED
 - E. DOOR OPERATORS - 22/6 TWISTED, STRANDED, SHIELDED

DOOR CARD ACCESS CONTROL DETAIL

NO SCALE



GENERAL SHEET NOTES

A. THE CEILING SPACE AVAILABLE REQUIRES COORDINATION WITH OTHER TRADES. THE CONTRACTORS SHALL PROVIDE ALL OFFSETS AND RELOCATE AS REQUIRED TO COORDINATE THE INSTALLATION OF ALL MATERIALS AND EQUIPMENT WITH OTHER TRADES.

B. ON DEMO DRAWINGS, ITEMS SHOWN LIGHT ARE EXISTING TO REMAIN, ITEMS SHOWN BOLD ARE EXISTING TO BE REMOVED.

C. ON NEW CONSTRUCTION DRAWINGS, ITEMS SHOWN LIGHT ARE EXISTING TO REMAIN, ITEMS SHOWN BOLD ARE NEW WORK.

PLUMBING & HEATING NOTES

1 1/2" CW DN, 1 1/2" V/2" W DN, 1/2" HW DN

2 VAV TERMINAL WITH HOT WATER REHEAT COIL ABOVE CEILINGS - TYPICAL.

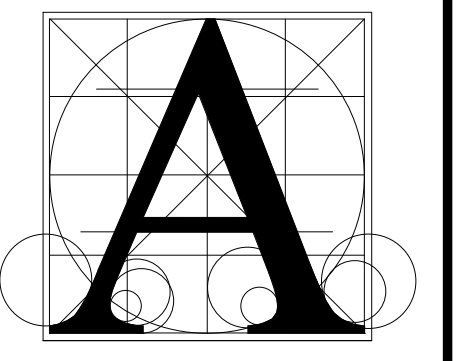
3 1/2" O DN TO OXYGEN MANFOLD AND TANKS

4 1/2" O DN TO ALARM VALVE COMBO UNIT.

5 1/2" O DN TO CEILING SINKS WITH HOSE REEL AND RETRACTOR

6 1 1/2" V/2" W DN

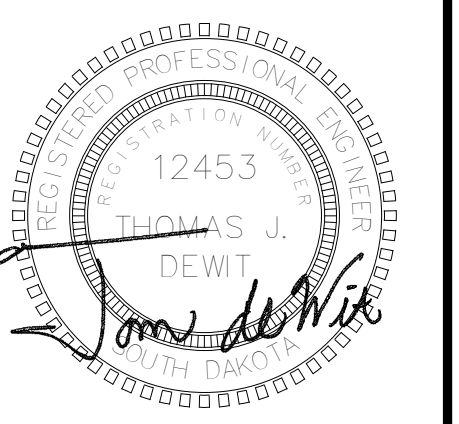
7 1/2" HW & 1/2" CW DN. EXTEND PIPING IN TOESPACE OF CABINET TO SINK



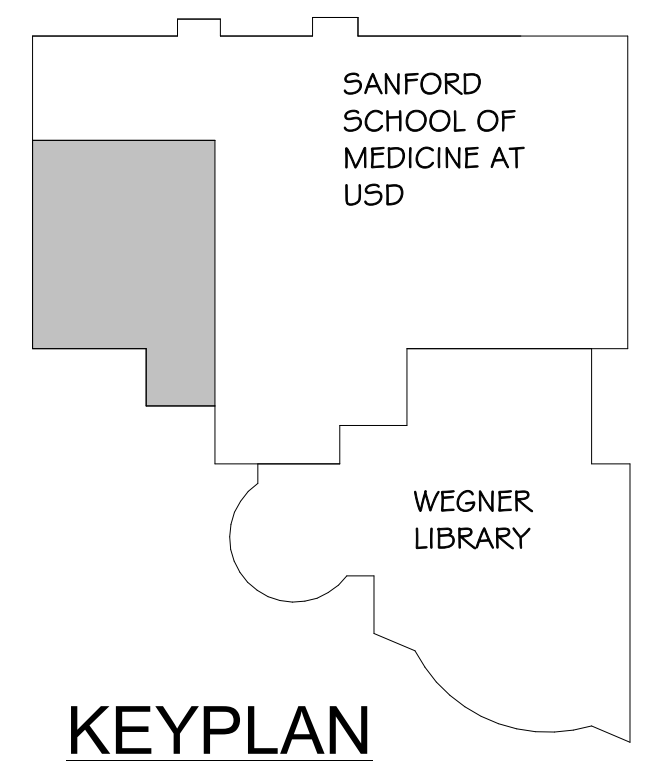
Architecture Incorporated

415 South Main Avenue
P.O. Box 2140
Sioux Falls, South Dakota
Phone: (605) 339-1711

815 St Joseph Street, Suite 203
P.O. Box 8047
Rapid City, South Dakota
Phone: (605) 721-1158



N
LOWER LEVEL FLOOR PLAN - PLUMBING & HEATING
 SCALE 0 2 4 6 8



KEYPLAN

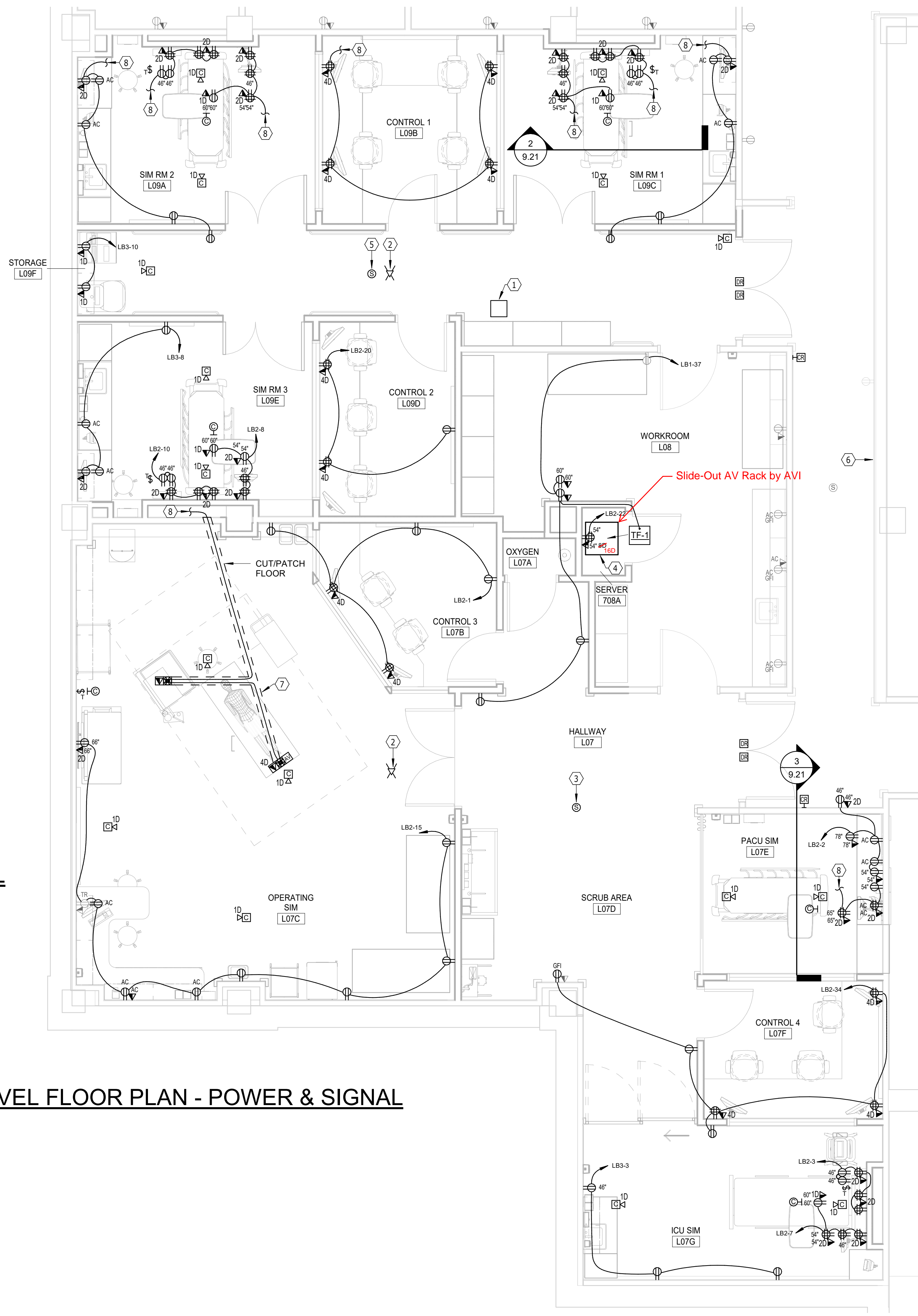
HEALTH SCIENCES SURGICAL SIMULATION SUITE RENOVATION - LOWER LEVEL FLOOR PLAN - PLUMBING & HEATING

number	2984	
date	AUGUST 8, 2022	
revision		
drawn	DWM	
checked	Td	
NO.	DATE	DESCRIPTION
1	8-26-22	Addendum #2

Associated Consulting Engineering, Incorporated
 340 S. Phillips Ave.
 Sioux Falls, SD 57104
 (605) 335-3720
 Fax 335-6220
 E-mail acei@aceinet.com
 ACEI #122058

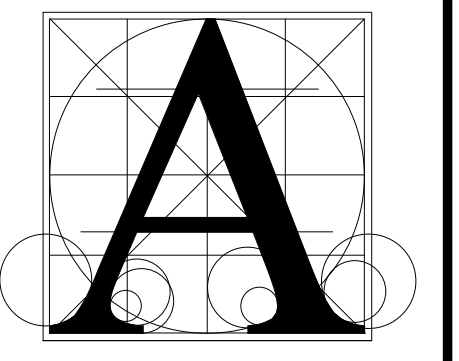
8.31

8/26/2022 9:44:00 AM



- GENERAL SHEET NOTES**
- TELECOMMUNICATIONS OUTLETS TO BE COMPRISED OF (2D) TWO DATA DROPS PER LOCATION UNLESS OTHERWISE NOTED. CABLING TO BE CAT6 VOIP. PROVIDE ALL CONNECTIONS AND ASSOCIATED ITEMS AS REQUIRED FOR SYSTEM INTEGRITY. SEE SPECIFICATIONS, IVORY FACEPLATES TO MATCH EXISTING INSTALLATIONS.
 - PROVIDE WHITE FIRE ALARM DEVICES, EXTEND SYSTEM AS REQUIRED.
 - PROVIDE GRAY DEVICES WITH STAINLESS STEEL FACE PLATES.
 - PROVIDE 1" C. RACEWAY SLEEVES FOR TELECOM CABLING ROUTING THROUGH WALLS GOING TO DECK THROUGHOUT.
 - AV BY OWNER.
 - CONFIRM ROUGH-IN LOCATIONS OF OUTLETS WITH FURNITURE SUPPLIER DURING CONSTRUCTION, SHIFT AS REQUIRED TO ACCOMMODATE ACCESSIBILITY.
 - ELECTRICAL CONTRACTOR SHALL INSTALL OWNER SUPPLIED DIGITAL CLOCK AND ASSOCIATED TIMER. PROVIDE ELECTRICAL CONNECTIONS AND RACEWAYS BETWEEN ITEMS AS REQUIRED.
 - PROVIDE TAMPER-RESISTANT RECEPTACLES.
 - PROVIDED ROUGH-IN ONLY FOR CARD ACCESS.
 - COORDINATE OUTLET FINISH COLORS ON HEADWALL WITH INTERIOR DESIGNER.
 - PROVIDE GFI OUTLETS WITHIN 6' OF SINKS.

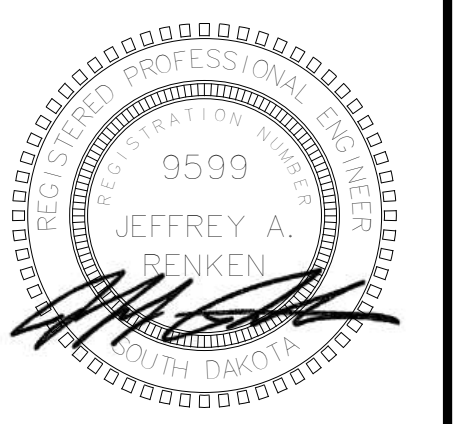
- ELECTRICAL NOTES**
- REINSTALL EXISTING CELL PHONE SIGNAL BOOSTER DEVICE.
 - REINSTALLED/SALVAGED WIRELESS ACCESS POINT.
 - REINSTALLED/SALVAGED PAGING SPEAKER.
 - AV RACK HEADEND LOCATION.
 - PROVIDE NEW MATCHING PAGING SPEAKER.
 - EXISTING GAMEWELL/FCI SYSTEM SENSOR (MIDWEST ALARM) FACP IS APPROXIMATELY 88' EAST OF THIS LOCATION.
 - COORDINATE FLOOR CUTS WITH ARCHITECT.
 - PROVIDE NEW 20A/1P CIRCUIT BREAKER IN PANEL SERVING AREA WITH SPARE CAPACITY.
 - MOUNT OUTLETS IN HEADWALL UNIT ASSEMBLY.



Architecture Incorporated

415 South Main Avenue
P.O. Box 2140
Sioux Falls, South Dakota
Phone: (605) 339-1711

815 St Joseph Street, Suite 203
P.O. Box 8047
Rapid City, South Dakota
Phone: (605) 721-1158

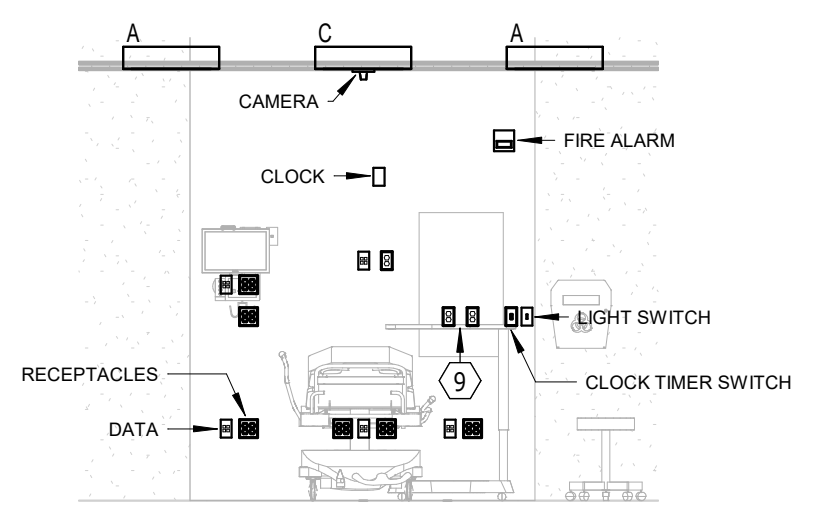


**HEALTH SCIENCES SURGICAL
SIMULATION SUITE RENOVATION
FLOOR PLAN - POWER & SIGNAL**

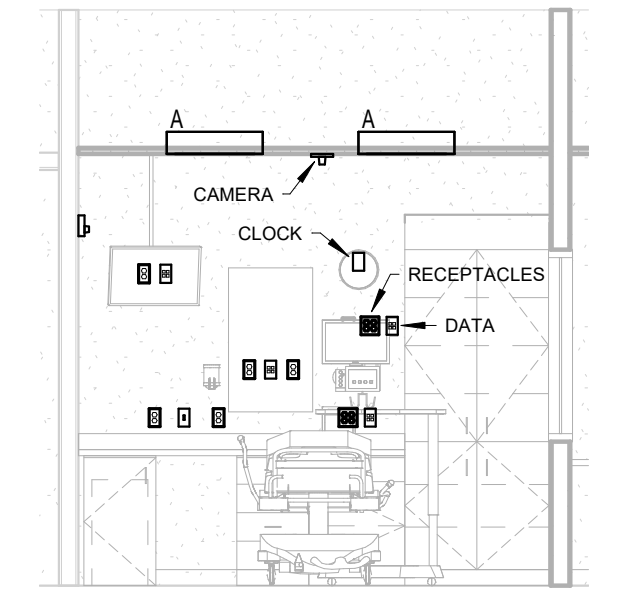
Project	HEALTH SCIENCES SURGICAL SIMULATION SUITE RENOVATION	
number	2984	
date	AUGUST 8, 2022	
revision		
drawn	ADP	checked JAR
NO.	DATE	DESCRIPTION

9.21

2 SIMULATION LAB HEADWALL
1/4" = 1'-0"



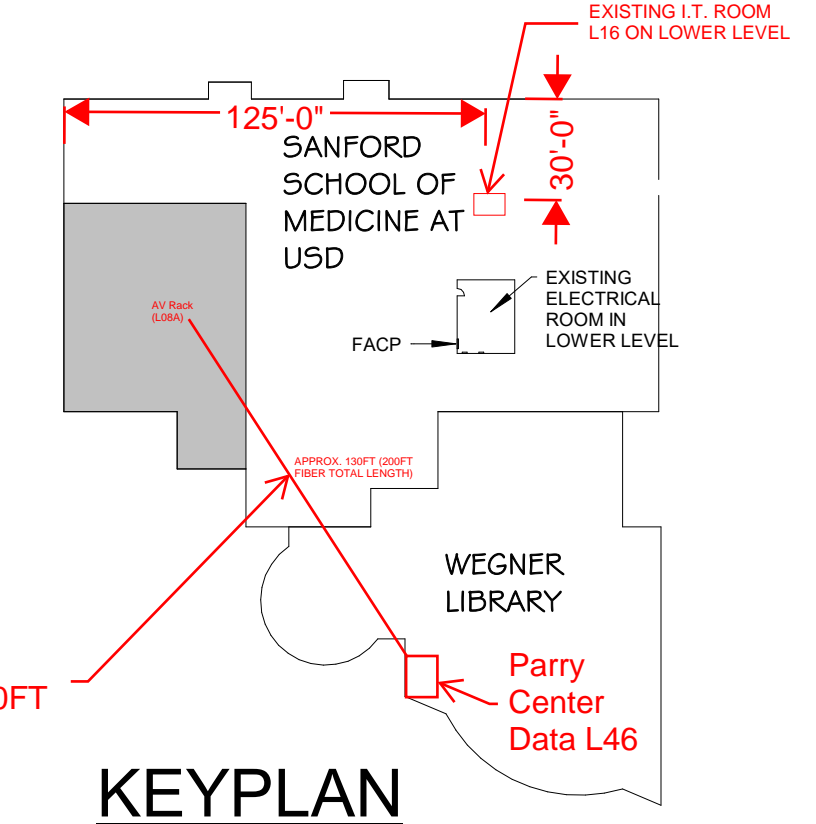
PACU SIM HEADWALL
SCALE 0 2 4 6 8



PARTIAL LOWER LEVEL FLOOR PLAN - POWER & SIGNAL
SCALE 0 2 4 6 8

All telecom field cabling for the renovation space shall route/terminate in the rack in the existing data closet L16 in the lower level.

PROVIDE 12-STRAND MM FIBER + 20' SERVICE LOOP ON EACH END - Approx. 200FT



KEYPLAN

Associated Consulting Engineering, Incorporated
340 S. Phillips Ave.
Sioux Falls, SD 57104
(605) 335-3720
Fax 335-6220
E-mail acei@aceinet.com
ACEI #122058

8/5/2022 12:51:56 PM