

**Addendum No. 3
January 24, 2024**

Project: **Lennox High School Addition**
Lennox, South Dakota
Architecture Incorporated Project No.: 2982

Architect: Architecture Incorporated

Letting: **Thursday, January 25, 2024**
2:00 p.m. (prevailing time)

Location: Lennox School District Administrative Conference Room located at 305 West 5th Avenue, Lennox, SD 57039.

Scope of this Addendum:

To all bidders and all others to whom drawings and specifications have been issued by Architecture Incorporated, this Addendum forms a part of the Contract Documents. Acknowledge receipt of this addendum by listing its number and date in the bidder's Form of Proposal. Failure to do so may subject bidder to disqualification. This addendum modifies the drawings and specifications as follows:

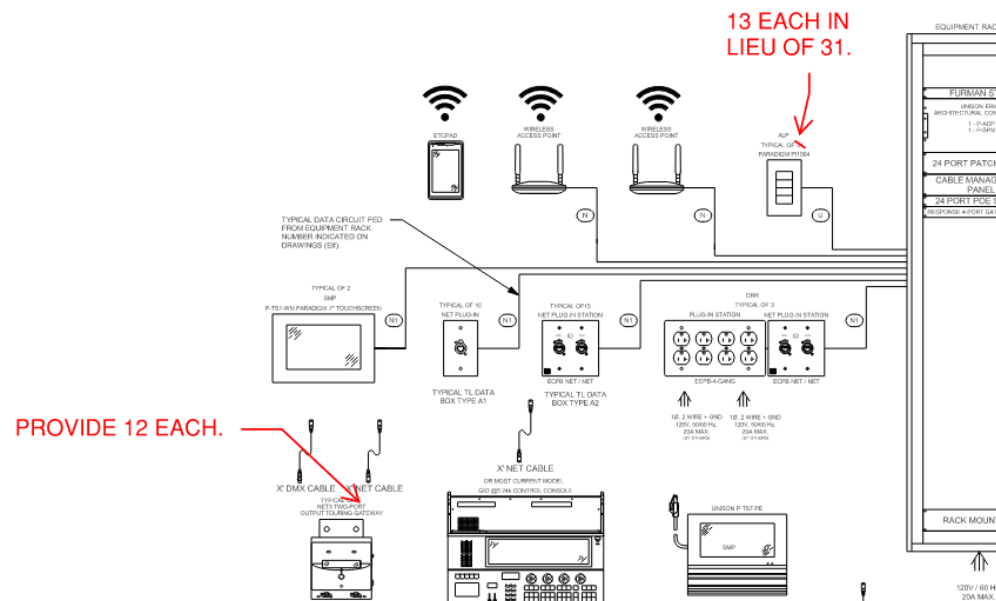
GENERAL ITEMS:

- 1) SECTION 055000 – METAL FABRICATIONS
 - a) CLARIFICATION: Unless specifically indicated otherwise on the drawings, exterior lintels do not need to be hot-dip galvanized. Non-galvanized exterior lintels shall be shop primed and field painted.
- 2) SECTION 055213 – PIPE AND TUBE RAILINGS
 - a) CLARIFICATION: Unless specifically indicated otherwise on the drawings, exterior railings do not need to be hot-dip galvanized. Non-galvanized exterior railings shall be shop primed and field painted.
- 3) SECTION 260933 – THEATRICAL LIGHTING CONTROL & DISTRIBUTION EQUIPMENT
 - a) Paragraph 2.02.E; page 9, Theatre Quantities Cables: Omit from the bid all stage cables as listed, items 1-17. All cables required will be purchased with the luminaire light fixture bid package by the owner at a future date.
- 4) SHEET 3.20-G – FOUNDATION PLAN – AREA G
 - a) The geofoam fill material adjacent to the precast concrete wall panels under the raised, stepped theatre seating shall be equal to Expanded Polystyrene EPS 19, 1.15 lb./cf. density.

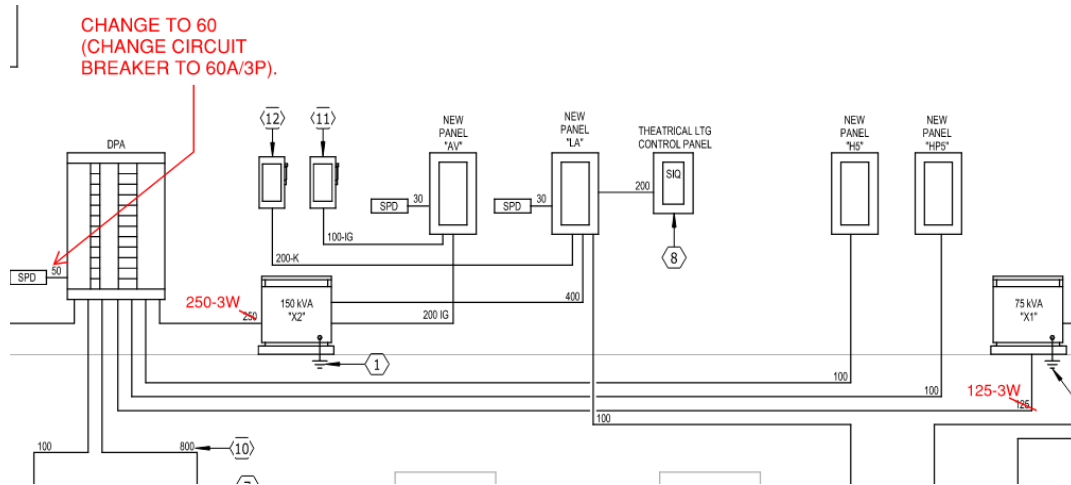
1) SHEET 9.11 – SITE PLAN – ELECTRICAL

-
- APPROXIMATE TENNIS COURT UNIT SUBSTATION AND LOAD CENTER LOCATION, VERIFY EXACT LOCATION WITH CIVIL ENGINEER.**
- 7" CONCRETE PAVEMENT**
8" AGGREGATE BASE COURSE
- 8" SCARIFY & RECOMPACT SUBGRADE**
- PROVIDE WP DUPLEX RECEPTACLE WITH IN-USE COVER, MOUNT ON FENCE POST AT APPROXIMATELY 46" AFG. CONNECT TO A 20A/1P GFI CIRCUIT BREAKER IN LOAD CENTER.**
- 21' (TYP.)**
COURTS 1 & 2
12'
18'
21' (TYP.)
COURTS 3 & 4
COURTS 5 & 6
FUTURE COURTS
- ADD ALTERNATE NO. 2 = COURTS 1 THRU 4**
ADD ALTERNATE NO. 3 = COURTS 1 THRU 6

a) Reference the snip below for revisions to the theatrical lighting power & control riser diagram.



b) Reference the snip below for revisions to the power riser diagram.



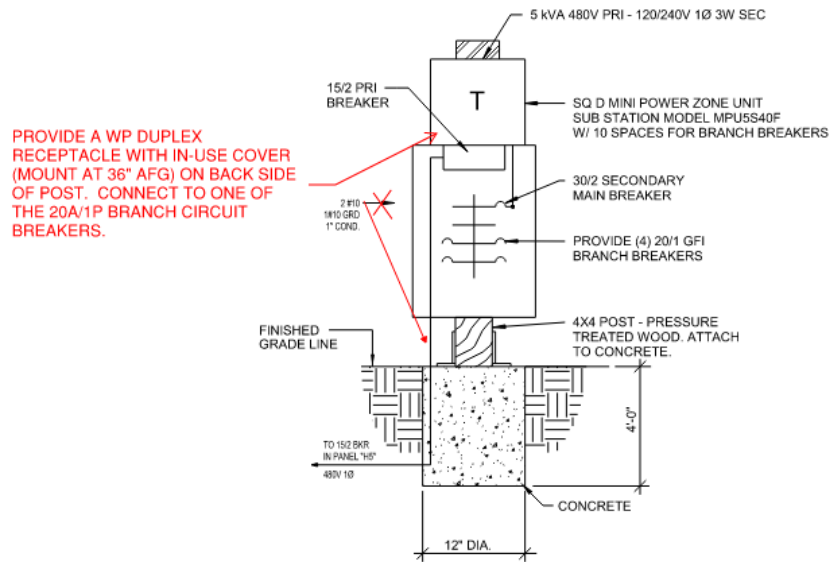
3) SHEET 9.62 – ELECTRICAL SCHEDULES

a) Lighting Fixture Schedule:

- a) The electrical contractor shall include a contractor cost allowance for the type "TS" lighting system as manufactured by Aluz. The total allowance amount shall be \$24,900.00 and shall include freight.
- b) The electrical contractor shall include a contractor cost allowance for each type "TC" luminaire as manufactured by Aquarii. The allowance shall be \$1,950.00 for each luminaire and shall include freight.

4) SHEET 9.63 – ELECTRICAL DETAILS

- a) Reference the snip below for revisions to the tennis court unit substation and load center detail.



TENNIS COURT POWER RISER DIAGRAM
NO SCALE
PART OF ALT #2 & #3

END OF ADDENDUM No. 3